

With Heart & Soil High performance agricultural tyres



Download the app now:
Agriculture TireTech





Bringing home the harvest together. With tyres you can trust.

Farming with Heart & Soil

Soil is the stage on which the great circle of life plays out. Changing with the weather and the seasons, it provides nurture and nourishment in a virtuous circle that repeats itself year upon year, round and round again.

No one understands this better than farmers. Without their passion no field would be ploughed, no seed sown, no harvest brought home. Come rain or shine, snowy winter or clement spring, farmers can be relied on to get the best out of the soil. It's their co-partner and counterpart, productive and demanding, always the driving force in cultivating and bringing home the best possible harvest.

At Continental we're cut from the same cloth. Like farmers, we work with nature, overcome its adversities, and treat it with respect. Our partnership with farmers begins with our shared passion for soil and is based on twofold contact: on the one hand, our close contact with farmers, which helps us to understand their challenges and offer solutions to master them; on the other hand, the contact our tyres have with the road and the field to bring farmers to where they want to go efficiently, comfortably and reliably.

We see partnership as a combination of the highest possible product quality and individual advice. We partner with farmers because we understand how they work and offer them precisely the right tyres to suit each specific application – now with the bonus of VF technology. Within this partnership we help farmers to optimise their profits in keeping with our quality motto: Engineered for Efficiency. Just as farmers are at one with nature, we are at one with them as we cater to their every need – with heart & soil.

Lousado – a fertile soil that helps innovation grow

Developing innovations is what drives us. We plough a great deal of investment into this goal at our dedicated site: our production plant in Lousado, Portugal. Here, we have the ideal soil for growing innovations. This is where ideas blossom into the new technologies that constantly improve our farmers' day-to-day work.



Extended warranty for up to 10 years on all qualifying Continental agricultural tyres

We guarantee our tyres' performance over and above statutory requirements at no extra cost. In the unlikely event something goes wrong, we're by your side:

- > **Basic coverage:** Manufacturing or material defects, up to 10 years after purchase
- > **Stubble damage coverage:** Stubble damage, up to three years after purchase
- > **Field hazard coverage:** Unintentional and unavoidable damage, e.g. puncture by debris, up to two years after purchase



If you need to make a claim, we'll subsidise the purchase of a new identical Continental tyre. Our contribution to the cost of a new tyre is limited to either the percentage of usable tread remaining, or percentage of remaining full years in the warranty period of the category you are claiming under, whichever is lower. Terms and conditions apply.

If you require detailed information about the extended warranty or have any other questions, don't hesitate to contact your sales representative.

Whatever the vehicle, whatever the task - we have the right tyre.

Farmers use their tractors and other agricultural machinery for a wide range of demanding tasks. Developed using innovative technologies, every Continental tyre is designed both to work in harmony with agricultural vehicles and help farmers with each of their specific jobs.



VF TractorMaster Hybrid



VF TractorMaster



TractorMaster



Tractor70



Tractor85



Tractor



Harvester



VF CombineMaster



CombineMaster



CompactMaster AG CompactMaster EM MPT81



70E



Special Telehandler/Unimog/Backhoe Loader

Technology that's ahead of the field.

VF technology

Agricultural tyres have to be all-rounders that deliver top performance on various soils and when carrying differing loads at varying speeds. Our VF technology (very high flexion technology) enables tyres to do precisely that – and be gentle on the soil thanks to their broader footprint.

All this is possible thanks to an optimised size ratio between apex and bead that improves the tyre deflection and reduces the compression on the outer surface of the rubber. The broader belt and shoulder area also optimise the distribution of forces to make the tyres highly durable. The benefits are

huge: VF tyres provide enhanced efficiency when switching between road and field, and can carry approximately 40% higher load than standard tyres at the same tyre pressure, or the same load at around 40% lower tyre pressure.

VF technology tyres



Standard tyres





Significant VF details for stronger results all around.

1 Belt geometry

The broader and stronger belt and more robust shoulder area enhance the sturdiness and durability of a VF tyre.

2 Bead geometry

The optimised bead geometry improves the bead area and sidewall deflection.

3 N.flex technology

The N.flex technology's nylon material gives the bead area and sidewall their flexibility.

d.fine
TECHNOLOGY

The lugs - specifically developed to stand their ground

Our new lugs refuse to give way: they firmly grip the ground beneath the tyre to keep driving the tractor forward without slipping. A large surface area and additional special touches make the high performance and extremely robust tyres adaptable to each specific location.

1 Deep lug overlap

- > Benefits on the road:
Comfortable drive, less vibration

2 5% more lug surface compared to standard tyres

- > Benefits in the field: High traction
- > Benefits on the road: Better mileage

3 Smooth linkage between block and base

- Benefits:
- > Stress resistant, damage resistant
 - > Optimum self-cleaning
 - > Traction

4 Sturdy blocks

- > Benefits in the field: Stability



A strong pair of shoulders.

N.flex
TECHNOLOGY



Unique N.flex carcass technology

The carcass' patented material is flexible enough to absorb impact and then return to its original shape without permanent deformation. This ensures long-term robustness and rounder tyres for a comfortable ride. A vast reduction in flat spots means an end to bumpy drives in the morning.

- > High impact resistance due to high elongation of nylon
- > High robustness: carcass structure absorbs impact energy without breaking

N.flex technology - for tyres that never tire

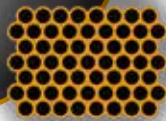
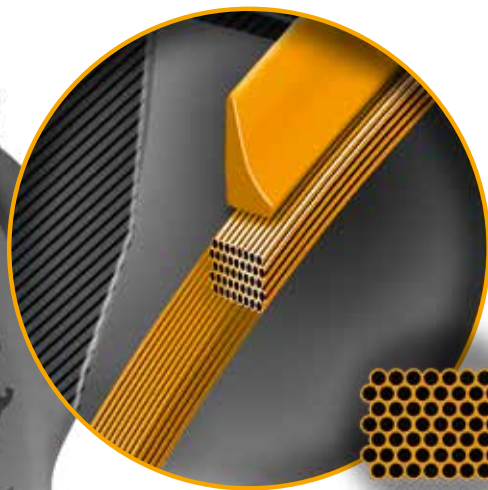
Smooth roads, rocky lanes, muddy fields - with our new N.flex nylon technology, our tyres can take one hell of a beating. At our high-tech plant in Lousado, we've developed a new type of nylon carcass that makes our tyres more robust and round. Faced with rocky lanes and fields, they roll with the punches and absorb the impact by spreading it over a large area. But just like a farmer, nothing and no-one will bend them: they take their knocks and then quickly bounce back to their usual round shape for a smooth, comfortable ride.

After a gruelling day in the heat, our tyres are ready for long drives and hard work the next morning: they retain their uniform shape for a comfortable ride with virtually no flat spots.

BEAD

TECHNOLOGY

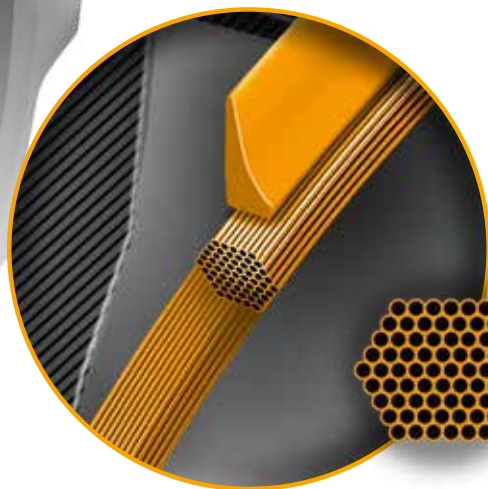
The bead is essential to a tyre, because it's what keeps it on the rim. Made of a single piece of wire, our beads are sturdy, compact, and keep their shape.



Rectangular bead core

The rectangular bead core design is optimised for the high torques of tractor tyres, and for the rear axle tyres on combine harvesters during all-wheel-drive.

- > The optimised contours of the apex enable a high degree of sidewall deflection.



Hexa bead core

The hexa bead core has been especially designed for the front tyres of combine harvesters.

- > The carcass material wraps around the core better for better power transmission. Higher core strength and a compact construction.

The bead - where our world meets yours

Right from the word go, tractor tyres are put through a test of strength and durability. Huge forces are applied to the bead when it is stretched over the rim, and it needs to snap right back into its original shape. This moment of truth is the next step in a partnership between our passion for engineering and the farmer's drive to harness the power of nature.

We leave nothing to chance during this crucial moment: each bead is made from a single piece of steel wire, and the hard-rubber rim strip covers the whole bead for easier mounting and enhanced durability. Our hexa bead technology is specially adapted for the front wheels of combine harvesters. With unmatched robustness and a constant shape, every one of our tyres rolls as smoothly along the road as it did off the production line.

The technologies at the heart of our stable, robust tyres.

Innovative technologies embrace every part of our tyres, extending its life and making your investment go further. Whether on the road or in the field, they will enable you to work for longer in safety and comfort.

TURTLE SHIELD TECHNOLOGY

Turtle Shield - deflects sharp objects, protects the carcass

Inspired by nature, the Turtle Shield base tread line mimics the shape of a turtle's shell, making the shoulder area extremely robust by deflecting foreign objects before they can do any damage. The unique shape offers additional protection by ensuring that the rubber over the carcass is reinforced and tough.

Turtle Shield

- > Increases robustness of tyres
- > Thick rubber and wide tread deflect objects from shoulder area
- > Inspired by nature: turtle-shell shape deflects debris



STEEL BELT

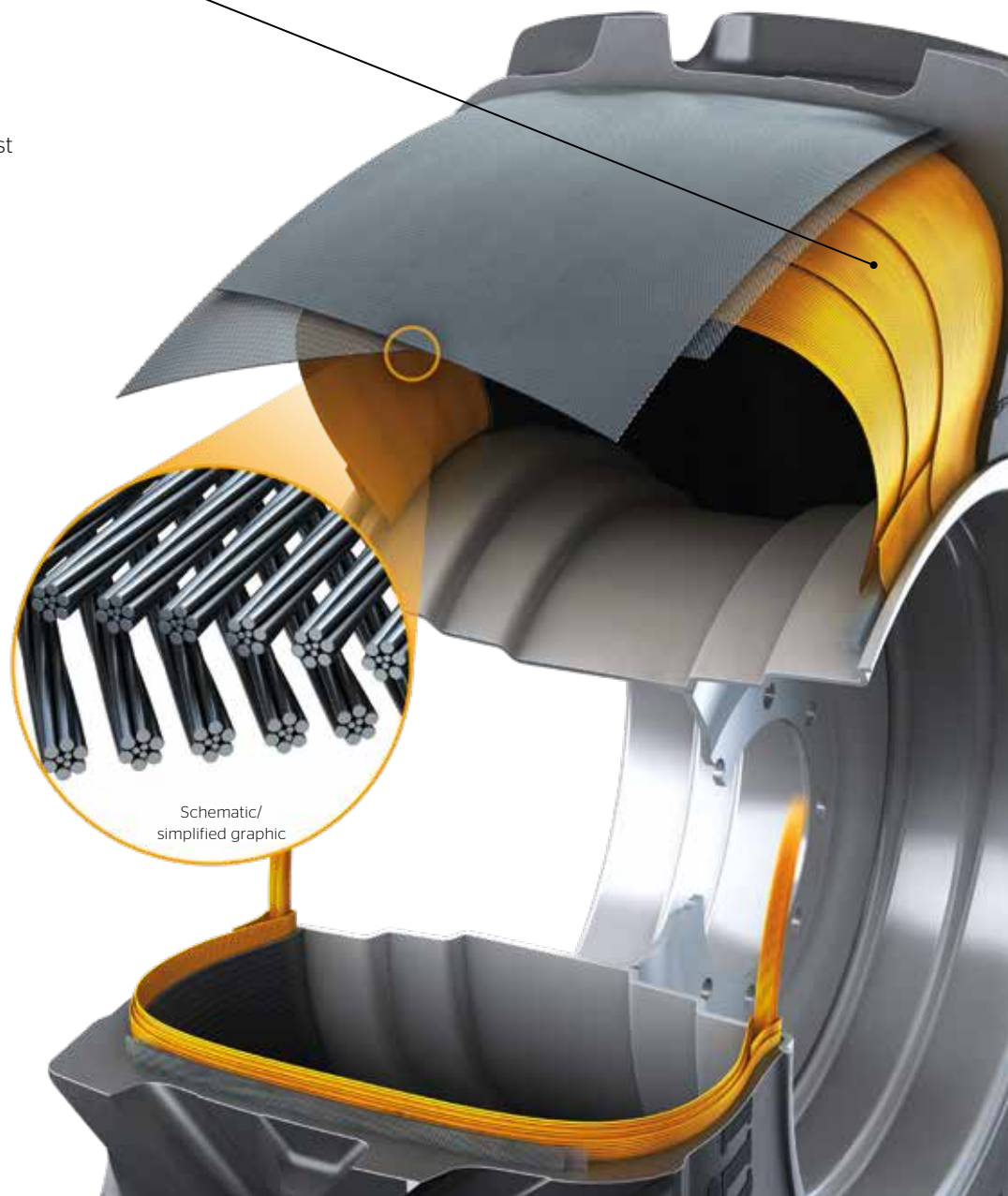
TECHNOLOGY

Twisted Steel Belt - tough and tensile

Two belt layers made of twisted steel cords provide high lateral stiffness for excellent tilting stability and exceptional protection of the central area of the tyre - ideal for applications that involve reaching, picking and moving heavy loads. The open cord structure ensures that the entire surface of the steel is covered in rubber to protect against corrosion.

Twisted Steel Belt

- > Protects central area against penetration and cuts from debris
- > Crossed-steel layers, specifically designed for each tyre size
- > High tensile cords with a unique twist can withstand greater elongation, for increased robustness







Tractor Tyres.

“The right tyre depends on the job –
but the brand is always Continental.”



sensor
CONNECT

VF TractorMaster Hybrid comes pre-equipped with tyre sensor. All other tyres can be retrofitted.

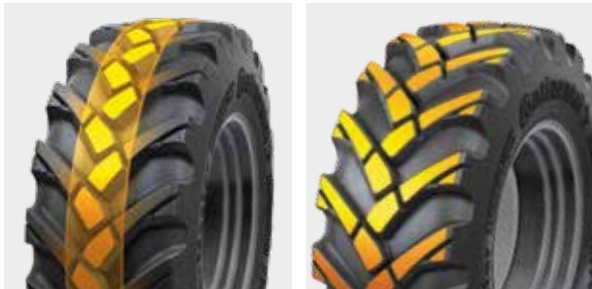
VF TractorMaster Hybrid

Gentle on the farmer's soil and your bottom line.

Agricultural contractors can be on the road almost as much as they work the fields. But because tyres respond differently to tarmacked surfaces than to grassland and fields, it's crucial to adapt. You can't change tyres whenever you arrive at a farm, but you can choose our hybrid tyre, the VF TractorMaster Hybrid. The innovative tread design squeezes out the maximum mileage on the road, while delivering high traction and fuel efficiency in the field. You can move from field to road and back without making adjustments, as the VF TractorMaster Hybrid takes 40% higher loads at the same tyre pressure. The built-in, contactless sensors will help you maintain the correct pressure - and with our web portal, you can do it whenever and wherever you want.



Feature	Effect	Benefit
1 Tread with large surface	> 30% larger surface	> High mileage on road > Good traction on hard and normal soil
2 Central block band	> Good surface adaptability	> Reduced noise and vibration
3 Rounded lugs	> Reduced cutting of roots on grassland > Minimised slippage on sandy soil	> Grassland protection > Lower fuel consumption
4 Bead technology	> High sidewall deflection performance	> Low soil compaction





VF TractorMaster

Less pressure on fields.

Road to field, field to road, again and again: day after day, different soil conditions, loads and speeds demand decisions of a farmer. With the VF TractorMaster, our engineers have developed a tyre that facilitates such decisions. Our VF technology allows these tyres to be driven with approximately 40% higher load or approximately 40% lower tyre pressure, which is ideal for flexibility switching between road and field - and reducing soil compaction while improving traction in the field.



Feature	Effect	Benefit
1 VF technology	> Approx. 40% higher load or approx. 40% lower tyre pressure	Efficient switching between road to field: > Higher productivity on roads > Improved traction on fields
2 d.fine lug technology	> 5% larger lug surface than standard tyres	> Optimum traction
3 N.flex technology	> Great impact resistance due to maximum elongation of nylon	> Excellent robustness
4 Bead technology	> High sidewall deflection performance	> Low soil compaction





TractorMaster

Higher durability and mileage.

Driven by passion and dedication, the farmer works in the field for as long as it takes to bring in the harvest. Likewise, our engineers go that extra mile so our tyres can support the farmer in all weather and on all terrain. They are miles ahead of standard tyres, integrating N.flex technology, our innovative bead design and advanced d.fine lug technology. Longer-lasting tyres take dedicated farmers further.



Feature	Effect	Benefit
1 d.fine lug technology	> 5% larger lug surface than standard tyres	> Optimum traction
2 N.flex technology	> Great impact resistance due to maximum elongation of nylon	> Excellent robustness
3 Bead technology	> High sidewall deflection performance	> Low soil compaction





Cover more ground and save fuel for a higher ROI



CONTINENTAL TRACTORMASTER

- ✓ Fuel consumption
- ✓ Area treated per hour
- ✓ Tyre efficiency
- ✓ DLG PowerMix transport cycles

DLG Test Report 7041

Continental TractorMaster is cream of the crop according to DLG's benchmarking exercise of premium agricultural tyres. It beats the reference tyres from other manufacturers in the following categories:

- > **Fuel consumption**
between 2.5% and 5% lower than reference tyres
- > **Ground coverage (ha/h)**
- > **Tyre efficiency**
over 67% higher than the others due to width

See the DLG test report for full details:



The DLG (German Agricultural Society) is a non-profit, politically independent organisation that strives for technical and scientific progress in crop production, farm machinery and animal husbandry. It puts farm machinery and tyres through their paces to help farmers invest wisely.

The test mark is valid for five years from 2019, reassuring many farmers that our TractorMasters is a wise choice for them in the long-term.



Tractor70

Maximum traction,
minimum soil compaction.

Farmers are not only tough, they are also conscientious in the way they treat the environment. In fields they need robust tyres that tread lightly and treat the precious soil with care. Tractor70 tyres are wider than standard tyres and therefore have a larger footprint. In combination with optimum self-cleaning properties and smooth, rounded lugs, Tractor70 tyres deliver impressively high traction. What's more, the special bead design enables these tyres to be driven at lower pressures than conventional tyres, which is gentler on the soil.



Feature	Effect	Benefit
1 Bead technology	> Longer footprint due to 0.2 bar lower pressure	> Low soil compaction > Good traction
2 Tread design	> Smooth interlug design and centre line	> Good self-cleaning properties
3 N.flex technology	> Flexibility due to low shrinkage of nylon material	> Comfort (better damping*)

* Compared to conventional tyres



Tractor85

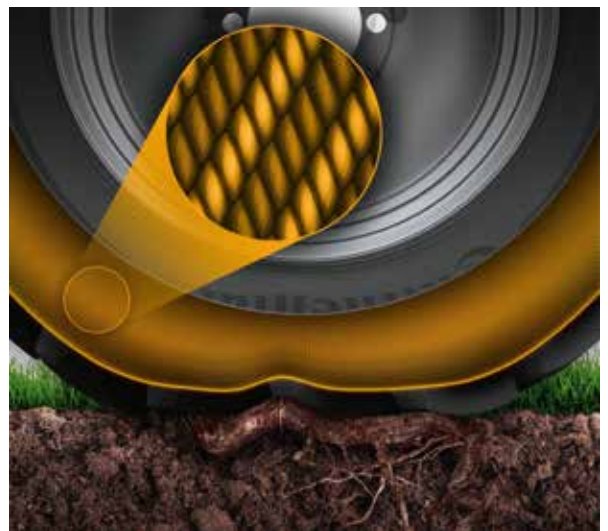
The all-rounder that fits every job.

Our Tractor85 is a tyre for all seasons and all surfaces. It is a true all-rounder: narrow enough to fit neatly into a furrow, but wide enough to fill the role of a versatile, heavy-duty farm tyre. Thanks to our special N.flex technology, the Tractor85 is durable and robust. Its nylon carcass makes the tyre extremely flexible, able to absorb more impacts than other tyres and less susceptible to flat spots - for a comfortable ride over fields and tarmac alike.

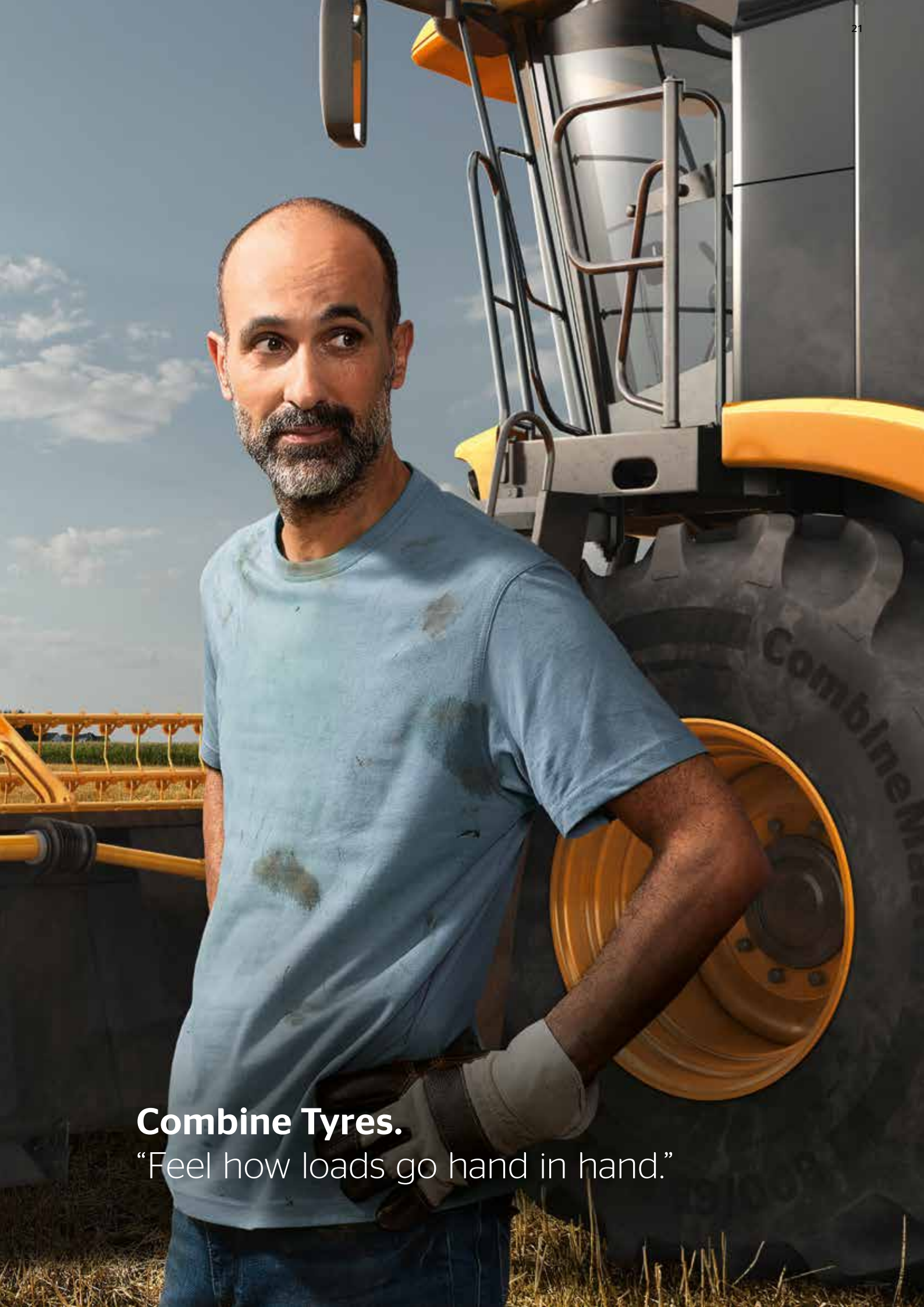


Feature	Effect	Benefit
1 Bead technology	> Longer footprint due to 0.2 bar lower pressure	> Low soil compaction > Good traction
2 Tread design	> Smooth interlug design and center line	> Good self-cleaning properties
3 N.flex technology	> Flexibility due to low shrinkage of nylon material	> Comfort (better damping*)

* Compared to conventional tyres







Combine Tyres.

“Feel how loads go hand in hand.”

VF CombineMaster

The master of cyclical loading.

During harvest operations, tyres are not only subjected to high speeds on the road they also have to deal with cyclical loading on the field. While the counterweight of the cutting unit effectively lightens the load on the field, tyres have to cope with greater weight and faster speeds on the road.

Our VF technology allows tyres to be used at reduced tyre pressure so they can be driven on roads and fields without adapting the tyre pressure or impacting their durability. As a rule of thumb, VF technology tyres can offer approximately 40% higher load or approximately 40% lower tyre pressure than standard tyres.



Feature	Effect	Benefit
1 VF technology for steering axles	> Approx. 40% higher load or approx 40% lower tyre pressure	> High load capacity on road
2 Rectangular bead	> Power thanks to high torque from rim to tyre	> Traction
3 N.flex technology	> Flexibility due to low shrinkage of nylon material	> Low vibrations > High comfort
4 d.fine lug technology	> Smooth linkage between block and base	> High wear resistance





CombineMaster

Hexa bead design – for high loads.

A combine harvester does the work of many hands. But one person is irreplaceable: the farmer. It is the farmer who has to safely steer these heavy machines along in the field. The broad shoulders, long footprint and optimised stability of our CombineMaster tyres provide farmers with invaluable support. With every detail developed for reliability and in combination with N.flex and d.fine technology, these tyres are the ideal solution when safety and soil protection are at stake.


The ideal solution for every combine harvester axle:

- > **Front axle:** CombineMaster with hexa bead design
- > **Rear axle:** VF CombineMaster with rectangular bead design

Feature	Effect	Benefit
1 N.flex technology	> Flexibility due to low shrinkage of nylon material	> Low vibration > High comfort
2 d.fine lug technology	> Smooth linkage between block and base	> High wear resistance
3 Hexa bead design	> Compact bead for high load	> Maximum carcass load capacity





A man with a beard, wearing a red long-sleeved shirt, khaki pants, and a blue and white baseball cap, is working on a large piece of machinery. He is looking upwards and to the right. The machinery is a tractor with a large, rusted metal cage or trailer attached. The cage is filled with many round, brown objects, possibly potatoes or onions. The tractor has large, treaded tires. The background shows green trees and a clear sky. The overall scene is outdoors, likely in a farm or agricultural setting.

Special Tyres.

“Continental tyres support me through all life’s twists and turns.”

NEW

CompactMaster AG

Excellent traction while moving heavy loads, anywhere on the farm.

Work on farms often entails reaching out to move heavy loads while pivoting, then transporting them. But loading, collecting and moving heavy items places even greater demands on vehicles when working in fields, on grassed land and on paved areas. This is why our versatile CompactMaster AG is designed to withstand strain in all directions, on all surfaces.

With the aid of the Twisted Steel Belt technology, our CompactMaster AG retains its shape and stiffness to prevent tilting. Turtle Shield technology provides excellent robustness. The CompactMaster AG enables speeds of up to 50 km/h on the road, even when towing trailers.



Feature	Effect	Benefit
1 Turtle Shield	<ul style="list-style-type: none"> > Protects the shoulder area against penetration and cuts from foreign objects (high volume of rubber in shoulder area) 	<ul style="list-style-type: none"> > Robustness
2 Steel Belt with a unique twist	<ul style="list-style-type: none"> > For high tyre stiffness in lateral direction > Protection against foreign objects in central area 	<ul style="list-style-type: none"> > High tilting stability > Robustness
3 Tread design with <ul style="list-style-type: none"> > 5% wider lug base* > Increased area between lugs 	<ul style="list-style-type: none"> > Pattern stability > Easy dislodging of adhesive soil 	<ul style="list-style-type: none"> > High traction on various grounds > Good self-cleaning behavior

* Compared to standard agricultural pattern



CompactMaster EM

Tread pattern with flexible blocks reduces wear on firm ground.

Our CompactMaster EM tyre is ideal for vehicles that work on paved surfaces, asphalt, sand and gravel, both in agriculture and the construction industry. In these conditions, vehicles cover extensive mileage in unpredictable situations, including pivoting while reaching and carrying heavy loads.

The CompactMaster EM meets these challenges head-on by integrating the Turtle Shield and Twisted Steel Belt technologies to prevent punctures and maximise robustness across the areas of the tyre that are subjected to the most strain. The special tread pattern contains a high volume of rubber, while the intricate surface of the flexible blocks reduces wear when turning on the spot.



Feature	Effect	Benefit
1 Turtle Shield	> Protects the shoulder area against penetration and cuts from foreign objects (high volume of rubber in shoulder area)	> Robustness
2 Steel Belt with a unique twist	> For high tyre stiffness in lateral direction > Protection against foreign objects in central area	> High tilting stability > Robustness
3 Tread pattern with 50% positive ratio and flexible tread block	> High rubber volume, flexible block movement when turning on the spot	> High mileage performance and low slippage





MPT81

Dedicated to service on all terrains and in multiple applications.

Whether you're repairing the Champs-Elysees, putting out forest fires, or digging gravel - our MPT81 ensures high performance, long life and versatility, on all surfaces and in all conditions. The design of the pattern's central band delivers speed and fuel efficiency, while the shoulder area ensures traction on loose surfaces. The tyre pressure can be reduced to provide a better grip on soil, while the Rim Protection Rib prevents air leaks.



The ideal tyre for your individual usage:

- > **Application:** Rescue services | Forestry | Construction sites | Municipal | Winter road service*
- > **Vehicles:** Municipal vehicles | Pickup trucks | Mobile homes | Off-road trucks | Wheel loaders | Telehandlers

* Approved for use where the Three Peak Mountain Snow Flake (3PMSF) certification is usually required by the German Ministry of Transport and Digital Infrastructure. Check the legal requirements for your country.

Feature	Effect	Benefit
1 Multifunctional tread design	> Three tread depth variations	> High performance on any surface
2 Turtle Shield Design	> Protects upper sidewall and shoulder area	> Robustness and puncture resistance
3 Special tread design with multiple block geometries	> Excellent self-cleaning capabilities	> High traction performance





70E

Dependable performance on challenging surfaces.

Our 70E can withstand demanding manoeuvres and tight turns across a wide range of terrains. It offers high traction on gravel and soil thanks to the wider-spaced, deeper lugs at the tyre's edge, while the tighter, shallower pattern in the central area is optimised for efficiency on flat concrete - whether reversing or driving forward. The Steel Belt, Turtle Shield and Rim Protection Rib technologies protect the tyre from foreign objects to ensure excellent productivity and minimum downtime.

The ideal tyre for your individual usage:

- > **Application:** Construction sites | Forestry | Agriculture | All terrain
- > **Vehicles:** Wheel loaders | Telehandlers



Feature	Effect	Benefit
1 Two-fold pattern design	> Dense block configuration with open outer tread design	> High work efficiency and low fuel consumption
2 Symmetrical pattern design	> High traction capability when driving forward or in reverse	> High work efficiency
3 Tight rim fit	> Bead protection for sidewall	> Reduces risk of flat tyres







Digital Solutions.

“It’s easy to make every tyre perform to its fullest potential.”

Harvest data to increase your yield

Correctly inflated tyres last longer, reducing purchase and fitting costs while minimising downtime. Our suite of digital solutions keeps farmers aware of the overall picture, notifying you when action is necessary to solve problems before they arise.

Each VF TractorMaster Hybrid tyre comes with a built-in tyre sensor, ready to connect to the ContiPressureCheck system. Any other Continental tyre can be retrofitted with a sensor. Pressure and temperature are reported every two minutes.

Beyond increasing tyre lifetime and performance, our digital solutions improve safety, productivity, eco-friendliness and more, and can be integrated into third-party data-driven management systems.

Your benefits



Data accuracy



Improved productivity



Cost efficiency



Versatility



Safety



Reliability



Eco-friendly



Transparency

ContiPressureCheck Single Vehicle Monitoring

ContiPressureCheck provides drivers with precise status information by continually monitoring air pressure and temperature via the tyre sensor. The system displays data in the driver's cab and warns before a condition becomes critical. ContiPressureCheck is a complete, driver focused system for single vehicles and can be integrated into third party telematics solutions.










ContiPressureCheck light is the ideal entry-level solution for single vehicle monitoring of tyre pressure and temperature using a Hand-Held tool.

ContiPressureCheck single is the perfect single-vehicle solution for monitoring tyre pressure and temperature using a dashboard display which provides the driver with a continuous view of tyre data.

ContiPressureCheck integrated allows OEMs and telematics providers to offer end users an easy solution for monitoring tyre pressure and temperature. In the integrated version, this display is already included in the vehicle telematic system of the customer or OEM. Data can be submitted via a third party telematic system to fleet managers.

Connect your tyres - Modular components

ContiPressureCheck (single vehicles)		
	<p>Hand-Held tool</p> <ul style="list-style-type: none"> > Initial configuration of entire system > Wireless communication with tyre sensors > Synchronises tyre sensors to each wheel position > Wired communication with CCU 	● ● ●
	<p>Display in the driver's cabin</p> <ul style="list-style-type: none"> > Display shows the status of the tyre and indicates 7 different types of warnings and the related tyre position in the driver's cabin 	● ●
	<p>Third party display in the driver's cabin</p> <ul style="list-style-type: none"> > Display shows the status of the tyre and indicates 7 different types of warnings and the related tyre position 	●
	<p>Tyre Sensor</p> <ul style="list-style-type: none"> > Integrated battery-powered tyre sensor with radio frequency transmitter - individual coding per running wheel > Sends data every 2 minutes 	● ● ●
	<p>Receiver/Central Control Unit (CCU)</p> <ul style="list-style-type: none"> > Receives and evaluates signals from tyre sensors > Generates warnings and provides them for display - Up to 24 tyres fitted on up to 6 axle 	● ● ●
	<p>Cleaning Scraper & Mounting Tool (for retrofitment of sensor)</p> <ul style="list-style-type: none"> > Scraper for pretreating the inner layer of the tyre > Pressing tool including insert > Tool for pressing on the tyre sensor during bonding 	
	<p>Additional Receiver</p> <p>Integrated antenna and receiver to be used if:</p> <ul style="list-style-type: none"> > Vehicle has an axle spread of more than 6m > Vehicle has more than 3 axles > A trailer is docked 	

ContiPressureCheck ● Light ● Single ● Integrated

Required Kits per Vehicle

Components	Article Number
● Light	Hand-Held tool 17 34 052 Tyre Sensors 17 34 119
● Single	Display 17 34 115 Hand-Held tool 17 34 119 CCU 17 34 121 Tyre Sensor
● Integrated	Hand-Held tool 17 34 115 CCU 17 34 119 Tyre Sensor 17 34 122 In-vehicle telematics integration-proprietary

Continental TireTech App

Make your daily work more efficient



The core element of the app is the Pressure-Load Calculator, which allows farmers to check the right pressure for their tyres depending on the load.

The app enables you to determine the right pressure for your Continental agricultural tyres based on their dedicated application in daily farming activities. This results in lower soil compaction, less wear on the tyres, greater efficiency and lower fuel consumption. In addition to the Pressure-Load Calculator, the app offers a wide range of technical information on our agricultural tyre portfolio, as well as a useful conversion table.

App Features:

Pressure-Load Calculator

The application uses the load to calculate the best tyre pressure for achieving optimum efficiency and maximum service life. The right pressure will also help you conserve your field and get the highest yield possible.

Lead Calculator

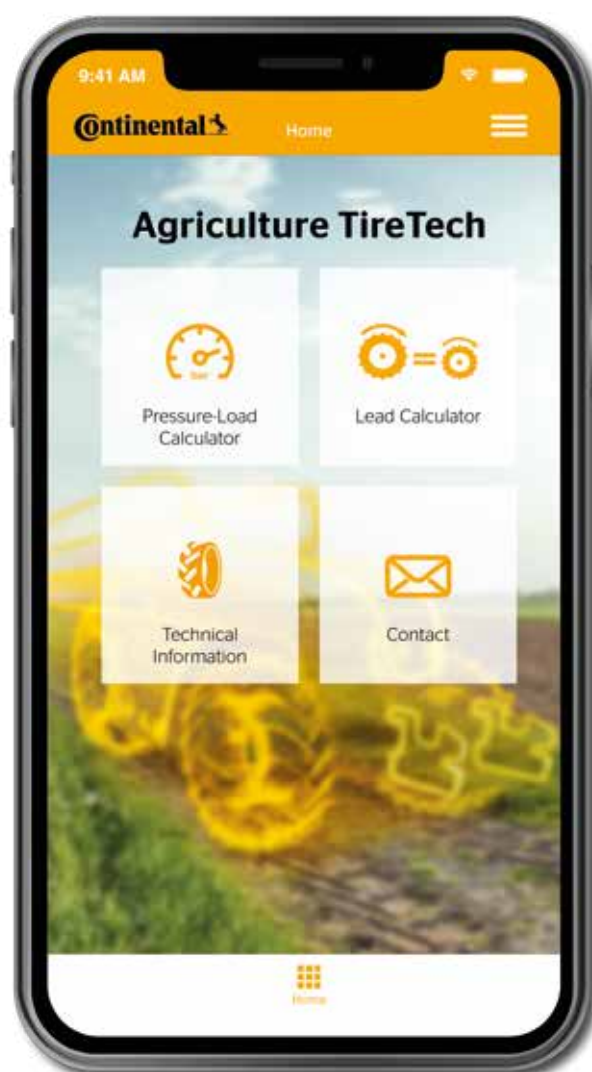
The Lead Calculator compares the rolling circumferences of all Continental tyres and provides a recommendation on whether the tyres you have selected are compatible with the mechanical transmission of your tractor.

Technical Information

Browse through products, technologies and sizes.

Contact Form

Contact our Sales team if you have any questions about our tyres.



Download the app for free now:

Agriculture TireTech



Pioneering eco-friendly innovations.

We work on pioneering renewable resources such as Taraxagum. For this successful initiative, we have received the European environmental prize "GreenTec Award." We also comply with the European Chemicals Directive REACH that stipulates the Registration, Evaluation, Authorisation and Restriction of Chemicals.

Continental Commercial Specialty Tyres (CST) continuously invests in the development of sustainable innovations for economically and ecologically efficient mobility. Besides the reduction of fuel and energy consumption, we focus on enhancing tyre performance for an extended lifecycle. Long-lasting tyres consume less energy across the entire tyre manufacturing process and in application. In addition, we strive to utilise the most environmentally friendly raw material sources.

We will continue to work on enhancing the sustainable performance of our tyres so as to make a valuable contribution to the protection of the environment and to a cleaner future.



VF TractorMaster Hybrid

Advanced Tyre

Tyre size LI/SSY	Rim width	Section width (mm)	Overall dia- meter (mm)	Loaded static radius (mm)	Rolling circum- ference (mm)	Speed Radius Index	Tyre load capacity (kg) at tyre pressure (bar)								Speed (km/h)
							0.4	0.6	0.8	1.0	1.2	1.4	1.6	2.0	
30 inch							0.4	0.6	0.8	1.0	1.2	1.4	1.6	2.0	
VF 600/70 R 30 NRO 168D	21	614							3295	3760	4225	4685	5150	5600	≤ 65
	18 NRO 20	584 604	1569	676*	4662*	750	2320	2835	3295	3760	4225	4685	5150	5600	≤ 30
42 inch							0.4	0.6	0.8	1.0	1.2	1.4	1.6	2.0	
VF 710/70 R 42 182D	25	748							4960	5660	6355	7055	7750	8500	≤ 65
	23 24	728 738	2049	890*	6112*	975	3490	4265	4960	5660	6355	7055	7750	8500	≤ 30

* Loaded static radius and rolling circumferences are calculated.
Specifications are subject to change without notice.
For other rims contact your Continental specialist.

VF TractorMaster

Advanced Tyre

Tyre size LI/SSY	Rim width	Section width (mm)	Overall dia- meter (mm)	Loaded static radius (mm)	Rolling circum- ference (mm)	Speed Radius Index	Tyre load capacity (kg) at tyre pressure (bar)								Speed (km/h)
							0.4	0.6	0.8	1.0	1.2	1.4	1.6	2.0	
30 inch							0.4	0.6	0.8	1.0	1.2	1.4	1.6	2.0	
VF 540/65 R 30 NRO 158D/155E	20	550*	1460*	639*	4102*	700			2560	2905	3255	3565	3875	4250	≤ 65
	18 16 NRO	530* 510*					1820	2170	2560	2905	3255	3565	3875	4250	≤ 30
VF 600/60 R 30 NRO 162D	20	603	1468	644*	4330*	700			2720	3105	3485	3870	4250	4750	≤ 65
	18 NRO 21	583 613					1915	2340	2720	3105	3485	3870	4250	4750	≤ 30
VF 600/70 R 30 NRO 168D	21	624	1573	676*	4587*	750			3295	3760	4225	4685	5150	5600	≤ 65
	18 NRO 20	594 614					2320	2835	3295	3760	4225	4685	5150	5600	≤ 30
42 inch							0.4	0.6	0.8	1.0	1.2	1.4	1.6	2.0	
VF 650/65 R 42 NRO 174D/171E	23	670*	1920*	849*	5682*	925			3960	4500	5040	5520	6000	6700	≤ 65
	21 20 NRO	650* 640*					2820	3360	3960	4500	5040	5520	6000	6700	≤ 30
VF 710/60 R 42 NRO 176D	25	717	1906	846*	5653*	925			4160	4745	5330	5915	6500	7100	≤ 65
	23 NRO 24	697 707					2925	3575	4160	4745	5330	5915	6500	7100	≤ 30
	27	737													
VF 710/70 R 42 182D	25	748	2040	890*	5999*	975			4960	5660	6355	7055	7750	8500	≤ 65
	23 24	728 738					3490	4265	4960	5660	6355	7055	7750	8500	≤ 30

* Loaded static radius and rolling circumferences are calculated.
Specifications are subject to change without notice.
For other rims contact your Continental specialist.

TractorMaster

Advanced Tyre

Tyre size LI/SSY	Rim width	Section width (mm)	Overall dia- meter (mm)	Loaded static radius (mm)	Rolling circum- ference (mm)	Speed Radius Index	Tyre load capacity (kg) at tyre pressure (bar)								Speed (km/h)						
							0.4	0.6	0.8	1.0	1.2	1.4	1.6	2.0		2.4	2.8				
20 inch																					
420/65 R 20 135D/138A8	13 11 12	416 396 406	1049	470*	3125*	500				1205	1355	1500	1650	1950	2180			65			
										1110	1265	1420	1575	1735	2050	2290			50		
										990	1150	1315	1475	1640	1800	2120	2360			40	
										855	1045	1215	1385	1555	1725	1900	2245	2505			30
										880	1075	1250	1425	1605	1780	1955	2310	2585			25
										915	1115	1300	1480	1665	1845	2030	2400	2680			20
			1115	1340	1535	1725	1910	2080	2250	2565	2925	3270			10						
24 inch																					
440/65 R 24 128D/131A8	14 13 15	449 439 459	1181	533*	3529*	575				1350	1510	1655	1800					65			
										1245	1420	1590	1740	1890					50		
										1090	1285	1465	1640	1795	1950					40	
										975	1160	1365	1555	1740	1905	2070					30
										1005	1195	1410	1600	1790	1960	2135					25
										1040	1240	1460	1660	1860	2035	2215					20
			1270	1490	1735	1945	2145	2320	2485	2700					10						
480/65 R 24 133D/136A8	15 14	485 475	1236	555*	3684*	600				1545	1730	1895	2060					65			
										1430	1620	1815	1990	2165					50		
										1255	1480	1680	1880	2060	2240					40	
										1115	1325	1565	1775	1990	2180	2370					30
										1145	1365	1610	1830	2050	2245	2440					25
										1190	1420	1670	1900	2130	2330	2535					20
			1450	1705	1985	2225	2460	2655	2845	3090					10						
540/65 R 24 140D/143A8	16 18	541 561	1307	584*	3885*	625				1875	2100	2300	2500					65			
										1735	1970	2205	2415	2625					50		
										1525	1800	2045	2290	2505	2725					40	
										1350	1610	1900	2155	2415	2645	2875					30
										1390	1660	1955	2220	2490	2725	2965					25
										1445	1720	2030	2305	2585	2830	3075					20
			1765	2075	2410	2705	2985	3220	3450	3750					10						
28 inch																					
440/65 R 28 131D/134A8	14 13 15	451 441 461	1292	588*	3875*	625				1465	1640	1795	1950					65			
										1350	1535	1720	1885	2050					50		
										1185	1400	1590	1780	1950	2120					40	
										1055	1255	1480	1680	1885	2065	2245					30
										1085	1295	1525	1735	1940	2125	2310					25
										1125	1345	1585	1800	2015	2205	2400					20
			1375	1615	1875	2105	2325	2510	2690	2925					10						
480/65 R 28 136D/139A8	15 14	483 473	1338	600*	4005*	650				1680	1880	2060	2240					65			
										1550	1765	1975	2165	2350					50		
										1360	1605	1825	2040	2235	2430					40	
										1210	1445	1700	1930	2165	2370	2575					30
										1250	1485	1750	1990	2230	2440	2655					25
										1295	1545	1820	2065	2315	2535	2755					20
			1580	1855	2160	2420	2670	2885	3090	3360					10						
540/65 R 28 142D/145A8	16 18	542 562	1421	632*	4217*	675				1990	2225	2440	2650					65			
										1835	2085	2335	2560	2785					50		
										1625	1915	2175	2435	2670	2900					40	
										1430	1705	2010	2285	2560	2805	3050					30
										1475	1760	2075	2355	2640	2890	3140					25
										1530	1825	2150	2445	2740	3000	3260					20
			1870	2200	2555	2865	3165	3410	3655	3975					10						
600/65 R 28 154D/157A8	20 18	612 592	1516	678*	4505*	700				2365	2645	2900	3150	3550	3750			65			
										2185	2480	2780	3045	3310	3730	3940				50	
										1930	2275	2590	2900	3175	3450	3875	4125				40
										1705	2030	2390	2715	3045	3335	3625	4085	4315			30
										1755	2090	2465	2800	3135	3435	3735	4205	4445			25
										1820	2170	2555	2905	3255	3565	3875	4365	4615			20
			2220	2610	3030	3400	3755	4060	4345	4845	5325	5625			10						
600/70 R 28 157D/160A8	20 18	627 607	1574	698*	4664*	725				2590	2910	3230	3550	3875	4125			65			
										2385	2720	3055	3390	3730	4070	4330				50	
										2130	2480	2830	3180	3525	3875	4250	4500				40
										1835	2245	2615	2980	3350	3715	4085	4455	4745			30
										1895	2315	2690	3070	3450	3830	4205	4590	4890			25
										1965	2400	2795	3190	3580	3975	4365	4765	5075			20
			2395	2885	3305	3715	4105	4485	4845	5425	5815	6190			10						

* Loaded static radius and rolling circumferences are calculated.
Specifications are subject to change without notice.
For other rims contact your Continental specialist.

TractorMaster

Advanced Tyre

Tyre size LI/SSY	Rim width	Section width (mm)	Overall dia- meter (mm)	Loaded static radius (mm)	Rolling circum- ference (mm)	Speed Radius Index	Tyre load capacity (kg) at tyre pressure (bar)									Speed (km/h)						
							0.4	0.6	0.8	1.0	1.2	1.4	1.6	2.0	2.4		2.8					
30 inch																						
540/65 R 30 150D/153A8	16 18	541 561	1482	669*	4427*	700				2045	2290	2505	2725	3075	3350				65			
										1890	2145	2405	2630	2860	3230	3520				50		
										1680	1980	2250	2520	2760	3000	3350	3650				40	
										1475	1755	2070	2350	2630	2885	3135	3535	3855				30
										1520	1810	2130	2420	2710	2970	3230	3645	3970				25
										1575	1875	2210	2515	2815	3085	3350	3780	4120				20
600/70 R 30 152D/155A8	20 18	631 611	1606	716*	4771*	750				2650	3000	3350	3550						65			
										2480	2785	3150	3520	3730						50		
										2190	2585	2900	3285	3670	3875						40	
										1900	2300	2715	3050	3450	3855	4085					30	
										1955	2370	2795	3140	3555	3970	4205					25	
										2030	2460	2905	3260	3690	4120	4365					20	
710/60 R 30 162D/165A8	23 21 24 25	713 698 723 733	1638	735*	4868*	775				2650	3000	3350	3550						65			
										2830	3180	3525	3875	4375	4750					50		
										2605	2970	3335	3705	4070	4595	4990					40	
										2340	2720	3105	3485	3870	4250	4750	5150				30	
										2005	2450	2850	3255	3655	4055	4455	5030	5465			25	
										2065	2525	2940	3350	3765	4180	4590	5185	5630			20	
34 inch																						
540/65 R 34 152D/155A8	16 18	548 568	1581	719*	4739*	750				2830	3180	3525	3875	4375	4750				65			
										2605	2970	3335	3705	4070	4595	4990				50		
										2340	2720	3105	3485	3870	4250	4750	5150				40	
										2005	2450	2850	3255	3655	4055	4455	5030	5465			30	
										2065	2525	2940	3350	3765	4180	4590	5185	5630			25	
										2145	2620	3050	3480	3910	4335	4765	5380	5845			20	
600/65 R 34 151D/154A8	20 18	626 606	1649	746*	4921*	775				2615	3150	3610	4050	4480	4890	5290	5965	6565	7125	10		
										2590	2900	3175	3450							65		
										2390	2715	3045	3335	3625						50		
										2100	2475	2815	3150	3450	3750					40		
										1865	2220	2620	2975	3335	3650	3970				30		
										1920	2290	2700	3065	3435	3760	4090				25		
650/65 R 34 161D/164A8	20 21 23	661 671 691	1729	778*	5160*	825				1995	2375	2800	3185	3565	3905	4245				20		
										2430	2855	3320	3720	4110	4440	4760	5175			10		
										2905	3255	3565	3875	4375	4625					65		
										2685	3050	3420	3745	4070	4595	4855				50		
										2380	2805	3190	3570	3910	4250	4750	5000			40		
										2095	2495	2940	3340	3745	4100	4455	5030	5320			30	
38 inch																						
540/65 R 38 147D/150A8	16 18	537 557	1685	763*	5042*	800				2730	3215	3730	4185	4620	4990	5350	5965	6565	6940	10		
										2305	2585	2830	3075							65		
										2130	2420	2710	2970	3230						50		
										1875	2210	2515	2815	3080	3350					40		
										1660	1980	2335	2650	2970	3255	3535				30		
										1715	2040	2405	2735	3060	3350	3645				25		
600/65 R 38 153D/156A8	20 18	619 599	1769	804*	5259*	825				1780	2120	2495	2835	3175	3480	3780				20		
										2170	2550	2970	3325	3670	3965	4245	4615			10		
										2740	3065	3360	3650							65		
										2530	2875	3220	3525	3835						50		
										2240	2640	3000	3360	3680	4000					40		
										1975	2350	2770	3150	3525	3860	4200				30		
			2035	2420	2855	3245	3635	3980	4325				25									
			2110	2515	2965	3365	3770	4130	4490				20									
			2575	3025	3520	3945	4355	4700	5035	5475				10								

* Loaded static radius and rolling circumferences are calculated.
Specifications are subject to change without notice.
For other rims contact your Continental specialist.

TractorMaster

Advanced Tyre

Tyre size LI/SSY	Rim width	Section width (mm)	Overall dia- meter (mm)	Loaded static radius (mm)	Rolling circum- ference (mm)	Speed Radius Index	Tyre load capacity (kg) at tyre pressure (bar)								Speed (km/h)									
							0.4	0.6	0.8	1.0	1.2	1.4	1.6	2.0		2.4	2.8							
38 inch																								
650/65 R 38 157D/160A8	20	661	1830	820*	5447*	875				3095	3465	3795	4125						65					
	21	671																						
	23	691																						
650/75 R 38 169D/172A8	21	683	1941	866*	5768*	925																		
	20	673																						
	23	703																						
650/85 R 38 173D/176A8	23	701	2088	915*	6154*	975																		
	20	671																						
	21	681																						
710/70 R 38 171D/174A8	23	740	1966	879*	5851*	925																		
	25	760																						
800/70 R 38 178D/181A8	27	853	2060	917*	6116*	975																		
	25	833																						
900/60 R 38 178D/181A8	28	893	2035	915*	6070*	975																		
	27	883																						
	30	913																						
42 inch																								
650/65 R 42 165D/168A8	20	650	1947	885*	5815*	925																		
	21	660																						
	23	680																						
710/70 R 42 173D/176A8	23	750	2075	933*	6191*	975																		
	25	770																						
710/75 R 42 175D/178A8	23	749	2171	967	6447	1025																		
	21	729																						
	24	759																						
	25	769																						

* Loaded static radius and rolling circumferences are calculated.
Specifications are subject to change without notice.
For other rims contact your Continental specialist.

Tractor85

85% Standard Tyre

Tyre size LI/SSY	Rim width	Section width (mm)	Overall dia- meter (mm)	Loaded static radius (mm)	Rolling circum- ference (mm)	Speed Radius Index	Tyre load capacity (kg) at tyre pressure (bar)								Speed (km/h)	
							0.6	0.8	1.0	1.2	1.4	1.6	2.0	2.4		2.8
24 inch							0.6	0.8	1.0	1.2	1.4	1.6	2.0	2.4	2.8	
								805	895	975	1040	1120				50
								790	885	985	1070	1140	1215			40
280/85 R 24 115A8/112B	10 9	297 287	1087	489*	3241*	525		845	950	1055	1145	1220	1300			30
								875	985	1090	1185	1270	1350			25
								970	1090	1210	1315	1405	1495			20
								1075	1210	1340	1460	1555	1655	1825		10
								995	1105	1200	1285	1360				50
							975	1095	1215	1320	1410	1500			40	
320/85 R 24 122A8/119B	11 9 10	338 318 328	1157	516*	3435*	550		1045	1170	1300	1410	1510	1605			30
								1080	1215	1350	1465	1565	1665			25
								1200	1345	1495	1625	1735	1845			20
								1330	1495	1655	1800	1925	2045	2250		10
								1095	1215	1320	1410	1500				50
							1075	1205	1335	1450	1550	1650			40	
340/85 R 24 125A8/122B	12 11	364 354	1194	530*	3540*	575		1150	1290	1430	1555	1660	1765			30
								1190	1335	1485	1610	1720	1830			25
								1320	1480	1645	1785	1910	2030			20
								1465	1645	1825	1980	2115	2250	2475		10
								1425	1580	1715	1835	1950				50
							1270	1425	1580	1715	1835	1950			40	
380/85 R 24 131A8/131B	12 11 13	399 389 409	1265	557*	3735*	600		1355	1525	1690	1835	1960	2085			30
								1405	1580	1755	1905	2035	2165			25
								1560	1750	1945	2110	2255	2400			20
								1730	1940	2155	2340	2500	2660	2925		10
								1680	1865	2025	2160	2300				50
							1495	1680	1865	2025	2160	2300			40	
420/85 R 24 137A8/137B	15 13 14	457 437 447	1320	578*	3890*	625		1600	1795	1995	2165	2315	2460			30
								1660	1865	2070	2245	2400	2555			25
								1840	2065	2290	2490	2660	2830			20
								2040	2290	2540	2760	2950	3135	3450		10
								1680	1865	2025	2160	2300				50
28 inch							0.6	0.8	1.0	1.2	1.4	1.6	2.0	2.4	2.8	
								965	1070	1160	1240	1320				50
								860	965	1070	1160	1240	1320			40
280/85 R 28 118A8/118B	10 9	293 283	1190	540*	3564*	575		920	1030	1145	1245	1330	1410			30
								950	1070	1185	1290	1375	1465			25
								1055	1185	1315	1430	1525	1625			20
								1170	1315	1460	1585	1690	1800	1980		10
								1170	1295	1410	1505	1600				50
							1040	1170	1295	1410	1505	1600			40	
320/85 R 28 124A8/124B	11 9 10	336 316 326	1259	567*	3757*	600		1115	1250	1385	1505	1610	1710			30
								1155	1295	1440	1565	1670	1775			25
								1280	1435	1595	1730	1850	1970			20
								1420	1595	1765	1920	2050	2180	2400		10
								1280	1420	1540	1645	1750				50
							1140	1280	1420	1540	1645	1750			40	
340/85 R 28 127A8/127B	12 11	357 347	1292	579*	3849*	625		1215	1365	1515	1650	1760	1875			30
								1265	1420	1575	1710	1825	1945			25
								1400	1570	1745	1895	2025	2155			20
								1550	1740	1935	2100	2245	2385	2625		10
								1370	1520	1650	1760	1900				50
							1340	1505	1670	1815	1935	2060			40	
380/85 R 28 133A8/130B	12 11 13	391 381 401	1361	606*	4041*	650		1435	1610	1785	1940	2070	2205			30
								1485	1670	1850	2010	2150	2285			25
								1645	1850	2050	2230	2380	2535			20
								1825	2050	2275	2470	2640	2810	3090		10
								1615	1790	1945	2080	2240				50
							1580	1775	1970	2140	2285	2430			40	
420/85 R 28 139A8/136B	15 13 14	454 434 444	1430	632*	4233*	675		1690	1900	2105	2290	2445	2600			30
								1755	1970	2185	2375	2535	2695			25
								1945	2180	2420	2630	2810	2990			20
								2155	2420	2685	2915	3115	3315	3645		10
								1615	1790	1945	2080	2240				50

* Loaded static radius and rolling circumferences are calculated.
Specifications are subject to change without notice.
For other rims contact your Continental specialist.

Tractor85

85% Standard Tyre

Tyre size LI/SSY	Rim width	Section width (mm)	Overall dia- meter (mm)	Loaded static radius (mm)	Rolling circum- ference (mm)	Speed Radius Index	Tyre load capacity (kg) at tyre pressure (bar)								Speed (km/h)		
							0.6	0.8	1.0	1.2	1.4	1.6	2.0	2.4		2.8	
30 inch							0.6	0.8	1.0	1.2	1.4	1.6	2.0	2.4	2.8		
380/85 R 30 135A8/135B	12	390	1417	633*	4215*	675	1590	1765	1920	2050	2180					50	
							1415	1590	1765	1920	2050	2180					40
							1515	1705	1890	2055	2195	2335					30
							1575	1765	1960	2130	2275	2420					25
							1745	1955	2170	2360	2520	2680					20
420/85 R 30 140A8/140B	15	453	1486	660*	4405*	700	1930	2170	2410	2615	2795	2975	3270			10	
							1825	2025	2200	2350	2500						50
							1625	1825	2025	2200	2350	2500					40
							1740	1955	2165	2355	2515	2675					30
							1805	2025	2250	2440	2610	2775					25
420/90 R 30 147A8/147B	13	425	1515	668*	4495*	725	2000	2245	2490	2705	2890	3075				20	
							2215	2490	2760	3000	3205	3410	3750				10
							1935	2145	2330	2490	2650	2900					50
							1725	1935	2145	2330	2490	2650	2900				40
							1845	2070	2295	2495	2665	2835	3105				30
460/85 R 30 145A8/145B	15	479	1554	686*	4594*	725	1910	2145	2385	2590	2765	2940	3220			25	
							2120	2380	2640	2870	3065	3260	3565				20
							2560	2840	3120	3355	3550	3735	4050				10
							2115	2350	2550	2725	2900						50
							1885	2115	2350	2550	2725	2900					40
34 inch	12	389	1504	678*	4507*	725	2015	2265	2515	2730	2915	3105				30	
							2090	2350	2605	2835	3025	3220					25
							2320	2605	2890	3140	3355	3565					20
							2570	2885	3205	3480	3715	3955	4350				10
							1655	1840	2000	2160	2300						50
380/85 R 34 137A8/137B	12	389	1504	678*	4507*	725	1470	1655	1840	2000	2160	2300				40	
							1575	1770	1970	2140	2315	2460					30
							1635	1840	2040	2220	2400	2555					25
							1810	2035	2265	2460	2660	2830					20
							2005	2260	2510	2730	2950	3135	3445				10
420/85 R 34 142A8/139B	15	453	1584	709*	4716*	750	1760	1955	2120	2265	2430					50	
							1725	1935	2145	2330	2490	2650					40
							1845	2070	2295	2495	2665	2835					30
							1910	2145	2385	2590	2765	2940					25
							2120	2380	2640	2870	3065	3260					20
460/85 R 34 147A8/147B	15	484	1661	739*	4928*	775	2350	2640	2925	3180	3395	3615	3975			10	
							2245	2490	2705	2890	3075						50
							2000	2245	2490	2705	2890	3075					40
							2140	2400	2665	2895	3095	3290					30
							2220	2490	2765	3005	3210	3415					25
38 inch	12	365	1560	712*	4684*	750	2460	2760	3065	3330	3555	3780				20	
							2725	3060	3395	3690	3940	4195	4615				10
							1680	1865	2025	2160	2300	2500					50
							1495	1680	1865	2025	2160	2300	2500				40
							1600	1795	1995	2165	2315	2460	2675				30
380/80 R 38 142A8/142B	12	372	1571	718*	4724*	750	1660	1865	2070	2245	2400	2555	2775			25	
							1840	2065	2290	2490	2660	2830	3075				20
							2225	2470	2710	2915	3080	3245	3510				10
							2045	2270	2465	2630	2800						50
							1820	2045	2270	2465	2630	2800					40
420/85 R 38 144A8/144B	15	454	1692	762*	5050*	800	1945	2185	2425	2635	2815	2995				30	
							2020	2270	2515	2735	2920	3110					25
							2240	2515	2790	3030	3235	3445					20
							2480	2785	3095	3360	3590	3820	4200				10

* Loaded static radius and rolling circumferences are calculated.
Specifications are subject to change without notice.
For other rims contact your Continental specialist.

Tractor85

85% Standard Tyre

Tyre size LI/SSY	Rim width	Section width (mm)	Overall dia- meter (mm)	Loaded static radius (mm)	Rolling circum- ference (mm)	Speed Radius Index	Tyre load capacity (kg) at tyre pressure (bar)								Speed (km/h)			
							0.6	0.8	1.0	1.2	1.4	1.6	2.0	2.4		2.8		
38 inch							0.6	0.8	1.0	1.2	1.4	1.6	2.0	2.4	2.8			
460/85 R 38 149A8/146B	15	486	1769	792*	5260*	825		2160	2395	2605	2780	3000				50		
							2115	2375	2635	2860	3055	3250			40			
	16	496						2260	2540	2815	3060	3270	3480				30	
								2345	2635	2920	3175	3390	3610			25		
								2600	2920	3240	3520	3760	4000				20	
								2880	3235	3590	3900	4165	4430	4875			10	
							2375	2635	2860	3055	3250					50		
480/80 R 38 149A8/149B	16	492	1744	786	5207	825		2115	2375	2635	2860	3055	3250			40		
							2260	2540	2815	3060	3270	3480			30			
	14	472						2345	2635	2920	3175	3390	3610				25	
								2600	2920	3240	3520	3760	4000			20		
	15	482						3140	3490	3835	4120	4360	4585	4875			10	
520/85 R 38 155A8/152B	16	534	1868	830*	5540*	875		2520	2830	3140	3410	3645	3875			50		
							2695	3025	3360	3650	3895	4145			30			
	15	524						2795	3140	3485	3785	4045	4300				25	
								3100	3480	3860	4195	4480	4765			20		
	18	554						3435	3855	4280	4650	4965	5285	5815			10	
42 inch							0.6	0.8	1.0	1.2	1.4	1.6	2.0	2.4	2.8			
480/80 R 42 156A8/156B	16	493	1849	838*	5536*	875		2210	2520	2830	3140	3450	3750	4000			50	
							1900	2210	2520	2830	3140	3450	3750	4000			40	
	14	473						2030	2365	2695	3025	3360	3690	4015	4280			30
								2105	2450	2795	3140	3485	3830	4165	4440			25
	15	483						2335	2715	3100	3480	3860	4245	4615	4920			20
								2810	3215	3610	3990	4355	4710	5265	5625	6000		
520/85 R 42 162A8/162B	16	526	1962	878*	5840*	925		2640	3010	3385	3755	4125	4500	4750			50	
							2270	2640	3010	3385	3755	4125	4500	4750			40	
	15	516						2430	2825	3220	3620	4015	4415	4815	5085			30
								2520	2930	3340	3755	4165	4580	4995	5275			25
	18	546						2790	3245	3705	4160	4615	5075	5535	5845			20
								3355	3845	4315	4770	5205	5630	6300	6750	7125		
46 inch							0.6	0.8	1.0	1.2	1.4	1.6	2.0	2.4	2.8			
480/80 R 46 158A8/158B	16	495	1954	890*	5865*	925		2270	2590	2910	3230	3550	3875	4250			50	
							1955	2270	2590	2910	3230	3550	3875	4250			40	
	14	475						2090	2430	2775	3115	3455	3800	4145	4550			30
								2165	2520	2875	3230	3585	3940	4300	4720			25
	15	485						2400	2795	3190	3580	3975	4365	4765	5230			20
								2885	3305	3715	4105	4485	4845	5425	5815	6375		
520/85 R 46 158A8/158B	16	533	2056	926*	6138*	975		2720	3105	3485	3870	4250					50	
							2340	2720	3105	3485	3870	4250			40			
	15	523						2500	2910	3320	3730	4140	4550				30	
								2595	3020	3445	3870	4295	4720			25		
	18	553						2875	3345	3815	4285	4755	5230				20	
								3450	3955	4440	4915	5360	5800	6375			10	
50 inch							0.6	0.8	1.0	1.2	1.4	1.6	2.0	2.4	2.8			
480/80 R 50 159 A8/159B	16	495*	2028*	930*	6107*	975		2740	3040	3300	3525	3750	4125	4375			50	
							2440	2740	3040	3300	3525	3750	4125	4375			40	
	14	475*						2610	2930	3250	3530	3770	4015	4415	4680			30
								2705	3040	3370	3665	3915	4165	4580	4855			25
	15	485*						3000	3365	3735	4060	4335	4615	5075	5380			20
								3655	4105	4555	4950	5290	5625	6190	6565	7125		

* Loaded static radius and rolling circumferences are calculated.
Specifications are subject to change without notice.
For other rims contact your Continental specialist.

Tractor70

70% Standard Tyre

Tyre size LI/SSY	Rim width	Section width (mm)	Overall dia- meter (mm)	Loaded static radius (mm)	Rolling circum- ference (mm)	Speed Radius Index	Tyre load capacity (kg) at tyre pressure (bar)								Speed (km/h)							
							0.4	0.6	0.8	1.0	1.2	1.4	1.6	2.0		2.4	2.8					
20 inch																						
280/70 R 20 116A8/116B	9	268	901	410*	2709*	380												65				
									635	715	800	875	950	1120	1250			50				
							8	258			550	635	715	800	875	950	1120	1250			40	
							10	278			500	590	680	760	855	935	1015	1200	1340			30
											515	610	705	790	885	970	1055	1245	1390			25
											575	680	785	875	980	1075	1170	1380	1540			20
				700	815	930	1025	1130	1220	1310	1475	1680	1875			10						
300/70 R 20 120A8/120B	9	282	939	425*	2810*	450												65				
									710	795	890	975	1060	1250	1400			50				
							10	292			615	710	795	890	975	1060	1250	1400			40	
											555	660	760	850	955	1045	1135	1340	1500			30
											575	680	790	880	990	1080	1175	1390	1555			25
											640	755	875	980	1095	1200	1305	1540	1720			20
				780	915	1035	1145	1270	1365	1465	1645	1875	2100			10						
320/70 R 20 123A8/123B	10	319	969	437*	2894*	475												65				
									770	865	965	1060	1150	1360	1550			50				
							9	309			665	770	865	965	1060	1150	1360	1550			40	
							11	329			605	715	825	925	1035	1130	1230	1455	1660			30
											625	740	855	955	1070	1175	1275	1510	1720			25
											695	820	950	1060	1190	1300	1415	1675	1905			20
				845	990	1120	1240	1370	1485	1585	1790	2040	2325			10						
360/70 R 20 120A8/120B	11	361	1043	466*	3102*	500												65				
									940	1050	1175	1290	1400			50						
							10	351			810	940	1050	1175	1290	1400			40			
							12	371			735	870	1005	1125	1260	1380	1500			30		
											760	900	1040	1165	1305	1430	1555			25		
											845	1000	1155	1290	1445	1585	1720			20		
				1030	1205	1365	1510	1670	1800	1930	2100			10								
380/70 R 20 122A8/122B	12	387	1075	478*	3198*	525												65				
									1005	1125	1260	1380	1500			50						
							11	377			870	1005	1125	1260	1380	1500			40			
							13	397			785	930	1075	1205	1350	1475	1605			30		
											815	965	1115	1250	1400	1530	1665			25		
											905	1070	1235	1385	1550	1695	1845			20		
				1105	1290	1470	1625	1790	1935	2070	2250			10								
24 inch																						
320/70 R 24 116D/119A8	10	323	1097	494*	3272*	525												65				
									940	1050	1175	1290	1400			50						
							9	313			880	985	1105	1210	1315			40				
							11	333			795	915	1025	1150	1260	1360			30			
											705	835	965	1080	1210	1325	1440			25		
											725	860	990	1110	1245	1365	1480			20		
				755	890	1030	1155	1290	1415	1540			10									
				835	990	1140	1280	1430	1570	1705	1875			10								
360/70 R 24 122D/125A8	11	358	1154	521*	3447*	550												65				
									1140	1265	1385	1500			50							
							10	348			1060	1195	1325	1450	1575			40				
							12	368			965	1105	1245	1385	1515	1650			30			
											845	1010	1165	1310	1450	1590	1725			25		
											875	1045	1200	1350	1495	1640	1780			20		
				905	1080	1245	1400	1555	1700	1845			10									
				1005	1200	1375	1545	1735	1890	2050	2250			10								
380/70 R 24 125D/128A8	12	386	1191	530*	3534*	575												65				
									1240	1385	1520	1650			50							
							11	376			1160	1300	1455	1595	1735			40				
							13	396			1050	1210	1355	1520	1660	1800			30			
											930	1100	1270	1425	1595	1745	1900			25		
											960	1135	1310	1465	1640	1800	1955			20		
				995	1175	1360	1520	1705	1865	2030			10									
				1105	1305	1510	1690	1890	2070	2250	2475			10								
420/70 R 24 130D/133A8	13	432	1251	559*	3722*	600												65				
									1425	1595	1750	1900			50							
							12	422			1335	1495	1675	1835	1995			40				
							14	442			1205	1395	1560	1750	1915	2060			30			
											1070	1265	1465	1640	1835	2010	2185			25		
											1105	1305	1510	1690	1890	2070	2250			20		
				1145	1355	1565	1755	1965	2150	2335			10									
				1270	1505	1735	1945	2175	2385	2590	2850			10								

* Loaded static radius and rolling circumferences are calculated.
Specifications are subject to change without notice.
For other rims contact your Continental specialist.

Tractor70

70% Standard Tyre

Tyre size LI/SSY	Rim width	Section width (mm)	Overall dia- meter (mm)	Loaded static radius (mm)	Rolling circum- ference (mm)	Speed Radius Index	Tyre load capacity (kg) at tyre pressure (bar)								Speed (km/h)										
							0.4	0.6	0.8	1.0	1.2	1.4	1.6	2.0		2.4	2.8								
24 inch																									
480/70 R 24 138D/141A8	15	488	1319	586*	3905*	625				1770	1980	2170	2360					65							
										1660	1860	2080	2280	2480								50			
							14	478		1500	1730	1940	2170	2375	2575								40		
							16	498		1330	1575	1820	2035	2280	2495	2715								30	
										1370	1620	1875	2095	2350	2575	2795									25
										1420	1685	1945	2175	2440	2670	2905									20
			1575	1865	2155	2415	2705	2960	3220	3540									10						
28 inch																									
360/70 R 28 125D/128A8	11	354	1254	571*	3763*	600				1240	1385	1520	1650					65							
										1160	1300	1455	1595	1735								50			
							10	344		1050	1210	1355	1520	1660	1805								40		
							12	364		930	1100	1270	1425	1595	1745	1900								30	
										960	1135	1310	1465	1640	1800	1955									25
										995	1175	1360	1520	1705	1865	2030									20
			1105	1305	1510	1690	1890	2070	2250	2475									10						
380/70 R 28 127D/130A8	12	381	1303	585*	3882*	625				1315	1470	1610	1750					65							
										1230	1380	1545	1690	1840								50			
							11	371		1110	1285	1435	1610	1765	1900								40		
							13	391		985	1165	1350	1510	1690	1850	2015								30	
										1015	1205	1390	1555	1740	1910	2075									25
										1055	1250	1440	1615	1810	1980	2155									20
			1170	1385	1600	1790	2005	2195	2385	2625									10						
420/70 R 28 133D/136A8	13	429	1353	610*	4042*	650				1545	1730	1895	2060					65							
										1450	1620	1815	1990	2165								50			
							12	419		1310	1510	1690	1895	2075	2240								40		
							14	439		1160	1375	1585	1775	1990	2180	2370								30	
										1195	1415	1635	1830	2050	2245	2440									25
										1240	1470	1700	1900	2130	2330	2535									20
			1375	1630	1880	2105	2360	2685	2810	3090									10						
480/70 R 28 140D/143A8	15	489	1421	637*	4233*	675				1875	2100	2300	2500					65							
										1760	1970	2205	2415	2625								50			
							14	479		1590	1835	2055	2300	2520	2725								40		
							16	499		1410	1670	1925	2155	2415	2645	2875								30	
										1450	1720	1985	2220	2490	2725	2965									25
										1505	1785	2060	2305	2585	2830	3075									20
			1670	1975	2285	2555	2865	3135	3410	3750									10						
30 inch																									
420/70 R 30 134D/137A8	13	420	1409	632*	4196*	675				1590	1780	1950	2120					65							
										1490	1670	1870	2050	2225								50			
							12	410		1345	1555	1740	1950	2135	2300								40		
							14	430		1195	1415	1635	1830	2050	2245	2440								30	
										1230	1455	1685	1885	2110	2310	2510									25
										1280	1510	1745	1955	2190	2400	2610									20
			1415	1675	1935	2170	2430	2660	2890	3180									10						
480/70 R 30 141D/144A8	15	491	1496	665*	4438*	700				1930	2165	2370	2575					65							
										1810	2030	2270	2485	2705								50			
							14	481		1635	1890	2115	2370	2595	2800								40		
							16	501		1450	1720	1985	2220	2485	2725	2960								30	
										1495	1770	2045	2290	2565	2805	3050									25
										1550	1835	2120	2375	2660	2915	3165									20
			1720	2035	2355	2635	2950	3230	3510	3865									10						

* Loaded static radius and rolling circumferences are calculated.
Specifications are subject to change without notice.
For other rims contact your Continental specialist.

Tractor70

70% Standard Tyre

Tyre size LI/SSY	Rim width	Section width (mm)	Overall dia- meter (mm)	Loaded static radius (mm)	Rolling circum- ference (mm)	Speed Radius Index	Tyre load capacity (kg) at tyre pressure (bar)							Speed (km/h)					
							0.4	0.6	0.8	1.0	1.2	1.4	1.6		2.0	2.4	2.8		
34 inch																			
480/70 R 34 143D/146A8	15 14 16	495 485 505	1593	721*	4767*	750				2045	2290	2505	2725				65		
										1915	2145	2405	2630	2860				50	
										1730	2000	2240	2505	2745	3000				40
										1535	1820	2100	2350	2630	2885	3135			30
										1580	1875	2165	2420	2710	2970	3230			25
										1640	1945	2245	2515	2815	3085	3350			20
520/70 R 34 148D/151A8	16 15 18	530 520 550	1656	739*	4920*	775				2365	2645	2900	3150				65		
										2215	2480	2780	3045	3310				50	
										2000	2310	2585	2895	3175	3450				40
										1775	2100	2425	2715	3045	3335	3625			30
										1830	2165	2500	2800	3135	3435	3735			25
										1900	2245	2595	2905	3255	3565	3875			20
			2105	2490	2880	3220	3610	3950	4295	4725			10						
38 inch																			
480/70 R 38 145D/148A8	15 14 16	479 469 489	1708	770*	5101*	800				2175	2435	2670	2900				65		
										2040	2285	2560	2800	3045				50	
										1840	2130	2380	2665	2920	3150				40
										1635	1935	2235	2500	2800	3070	3335			30
										1685	1995	2300	2575	2885	3160	3435			25
										1750	2070	2390	2675	2995	3280	3565			20
520/70 R 38 150D/153A8	16 15 18	527 517 547	1771	795*	5260*	825				2515	2815	3080	3350				65		
										2355	2640	2955	3235	3520				50	
										2130	2460	2750	3080	3375	3650				40
										1890	2235	2580	2890	3235	3545	3855			30
										1945	2300	2660	2975	3335	3650	3970			25
										2020	2390	2760	3090	3460	3790	4120			20
			2240	2650	3060	3425	3835	4205	4570	5025			10						
580/70 R 38 155D/158A8	18	596	1853	827*	5505*	875				2905	3255	3565	3875				65		
										2725	3050	3420	3745	4070				50	
										2460	2845	3180	3565	3905	4250				40
										2185	2585	2985	3340	3745	4100	4455			30
										2250	2665	3075	3445	3855	4225	4590			25
										2335	2765	3195	3575	4005	4385	4765			20
			2590	3065	3540	3965	4440	4860	5285	5815			10						

* Loaded static radius and rolling circumferences are calculated.
Specifications are subject to change without notice.
For other rims contact your Continental specialist.

VF CombineMaster

Advanced Tyre

Tyre size LI/SSY	Rim width	Section width (mm)	Overall dia- meter (mm)	Loaded static radius (mm)	Rolling circum- ference (mm)	Speed Radius Index	Tyre load capacity (kg) at tyre pressure (bar)						Speed (km/h)
							1.2	1.4	1.6	2.0	2.4	2.8	
24 inch							1.2	1.4	1.6	2.0	2.4	2.8	
VF 500/85 R 24 CFO 167A8/167B	18 16	525	1430	596*	4117*	700	3485	3870	4250	4625	4875	5450	50
		3485					3870	4250	4625	4875	5450	≤ 40	
		3890					4320	4745	5200	5525	6015	30 cycl.	
		4640					5150	5660	6200	6590	7170	15 cycl.	
26 inch							1.2	1.4	1.6	2.0	2.4	2.8	
VF 620/70 R 26 CFO 173A8/173B	21 20 23	618	1501	638*	4362*	725	4225	4685	5150	5600	6000	6500	50
		4225					4685	5150	5600	6000	6500	≤ 40	
		4665					5175	5690	6340	6695	7280	30 cycl.	
		5560					6170	6780	7555	7985	8680	15 cycl.	
VF 750/65 R 26 CFO 177A8/177B	27 25 28	763	1606	680*	4658*	775	5165	5660	6150	6700	7300		50
		5165					5660	6150	6700	7300		≤ 40	
		5790					6340	6890	7540	8190		30 cycl.	
		6900					7560	8215	8990	9765		15 cycl.	
28 inch							1.2	1.4	1.6	2.0	2.4	2.8	
VF 600/65 R 28 CFO NRO 163A8/163B	21 18 NRO 20	592	1463	633*	4345*	700	3675	4025	4375	4875			50
		3675					4025	4375	4875			≤ 40	
		4095					4485	4875	5525			30 cycl.	
		4885					5350	5815	6590			15 cycl.	
30 inch							1.2	1.4	1.6	2.0	2.4	2.8	
VF 500/85 R 30 CFO 170A8/170B	18 16	519	1584	672*	4601*	775	3795	4210	4625	5000	5450	6000	50
		3795					4210	4625	5000	5450	6000	≤ 40	
		4265					4730	5200	5690	6015	6500	30 cycl.	
		5085					5640	6200	6780	7170	7750	15 cycl.	

* Loaded static radius and rolling circumferences are calculated.
Specifications are subject to change without notice.
For other rims contact your Continental specialist.

CombineMaster

Advanced Tyre

Tyre size LI/SSY	Rim width	Section width (mm)	Overall dia- meter (mm)	Loaded static radius (mm)	Rolling circum- ference (mm)	Speed Radius Index	Tyre load capacity (kg) at tyre pressure (bar)								Speed (km/h)							
							0.8	1.0	1.2	1.4	1.6	2.0	2.4	2.8		3.2	4.0					
32 inch							0.8	1.0	1.2	1.4	1.6	2.0	2.4	2.8	3.2	4.0						
650/75 R 32 CHO 172A8/172B	21	636	1795	794*	5314*	875		3375	3795	4210	4625	5000	5450	5800	6300		50					
							20	626													40	
	23	656										3615	4060	4505	4950	5350	5830	6205	6740		30	
												3750	4210	4670	5135	5550	6050	6440	6995		25	
												4155	4665	5175	5690	6150	6705	7135	7750		20	
												4300	4835	5345	5840	6315	6910	7500	8175	8600	9450	10
												4885	5570	6260	6945	7630	8250	8995	9570	10395		15 cycl.
												5330	6075	6825	7575	8325	9000	9810	10440	11340		10 cycl.
												3980	4470	4960	5450	6000	6500	7100	7750		50	
												3980	4470	4960	5450	6000	6500	7100	7750		40	
						4255	4780	5305	5830	6420	6955	7595	8295		30							
680/85 R 32 CHO 179A8/179B	21	681	1955	849*	5812*	925		4415	4960	5505	6050	6660	7215	7880	8605		25					
							20	671													20	
	25											4895	5495	6100	6705	7380	7995	8735	9535		20	
												5080	5700	6305	6880	7440	8220	9000	9750	10375	11625	10
												5755	6565	7375	8185	8995	9900	10725	11715	12790		15 cycl.
												6280	7160	8045	8925	9810	10800	11700	12780	13950		10 cycl.
												4090	4580	5015	5450	5800	6300	6900	7500		50	
												4090	4580	5015	5450	5800	6300	6900	7500		40	
												4375	4900	5365	5830	6205	6740	7385	8025		30	
												4535	5080	5565	6050	6440	6995	7660	8325		25	
800/65 R 32 178A8/178B	27	800	1854	818*	5461*	875		5030	5630	6165	6705	7135	7750	8485	9225		20					
							25	780														
	25											5250	5885	6500	7020	7520	8110	8700	9450	10050	11250	10
												5430	6080	6715	7255	7770	8380	8990	9765	10385		15 cycl.
												5955	6670	7370	7955	8525	9195	9860	10710	11390		10 cycl.
												4380	4920	5460	6000	6500	6900	7750	8250		50	
												4380	4920	5460	6000	6500	6900	7750	8250		40	
												4685	5265	5840	6420	6955	7385	8295	8830		30	
												4860	5460	6060	6660	7215	7660	8605	9160		25	
												5385	6050	6715	7380	7995	8485	9535	10150		20	
800/70 R 32 CHO 181A8/181B	27	770	1943	857*	5744*	925		5585	6275	6940	7575	8190	8970	9750	10350	11025	12375	10				
							25	750														
	25											6335	7225	8120	9010	9900	10725	11385	12790	13615		15 cycl.
												6910	7885	8855	9830	10800	11700	12420	13950	14850		10 cycl.
												4235	4755	5280	5800	6500	7100	7750	8250		50	
												4235	4755	5280	5800	6500	7100	7750	8250		40	
												4530	5090	5645	6205	6955	7595	8295	8830		30	
												4700	5280	5860	6440	7215	7880	8605	9160		25	
												5210	5850	6490	7135	7995	8735	9535	10150		20	
												5405	6070	6710	7325	7915	8835	9750	10650	11225	12375	10
900/60 R 32 CHO 181A8/181B	28	862	1917	855*	5696*	925		6125	6985	7845	8710	9570	10725	11715	12790	13615		15 cycl.				
							27	840														
	30	882										6680	7620	8560	9500	10440	11700	12780	13950	14850		10 cycl.
												4600	5165	5735	6300	7100	7500	8250		50		
												4600	5165	5735	6300	7100	7500	8250		40		
												4920	5530	6135	6740	7595	8025	8830		30		
												5105	5735	6365	6995	7880	8325	9160		25		
												5655	6355	7050	7750	8735	9225	10150		20		
												5870	6595	7285	7955	8600	9625	10650	11250	12750		10
												6655	7590	8525	9460	10395	11715	12375	13615		15 cycl.	
						7260	8280	9300	10320	11340	12780	13500	14850		10 cycl.							
38 inch							0.8	1.0	1.2	1.4	1.6	2.0	2.4	2.8	3.6	4.0						
900/60 R 38 CHO 181A8/181B	28	850	2061	925*	6144*	975		4600	5165	5735	6300	7100	7500	8250		50						
							27	840														
	30	870										4920	5530	6135	6740	7595	8025	8830		30		
												5105	5735	6365	6995	7880	8325	9160		25		
												5655	6355	7050	7750	8735	9225	10150		20		
												5870	6595	7285	7955	8600	9625	10650	11250	12750		10
												6655	7590	8525	9460	10395	11715	12375	13615		15 cycl.	
												7260	8280	9300	10320	11340	12780	13500	14850		10 cycl.	

* Loaded static radius and rolling circumferences are calculated.
Specifications are subject to change without notice.
For other rims contact your Continental specialist.

CompactMaster AG

Advanced Tyre

Tyre size LI/SSY	Rim width	Section width (mm)	Overall dia- meter (mm)	Loaded static radius (mm)	Rolling circum- ference (mm)	Speed Radius Index	Tyre load capacity (kg) at tyre pressure (bar)								Speed (km/h)
							1.6	2.0	2.4	2.8	3.2	3.6	4.0	4.4	
24 inch							1.6	2.0	2.4	2.8	3.2	3.6	4.0	4.4	
							2120	2500	2885	3270	3650	4010	4375		50
							2120	2500	2885	3270	3650	4010	4375		40
460/70 R 24 IND 159A8/159B	15	481					2240	2650	3055	3460	3870	4275	4680		30
	16	491	1244	559	3710*	600	2320	2740	3165	3585	4010	4435	4860		25
	14	471					2570	3140	3710	4280	4850	5420	5990	6560	10 cycl.
							3940	4815	5690	6560	7435	8310	9185	10060	0 stat.

CompactMaster EM

Advanced Tyre

Tyre size LI/SSY	Rim width	Section width (mm)	Overall dia- meter (mm)	Loaded static radius (mm)	Rolling circum- ference (mm)	Speed Radius Index	Tyre load capacity (kg) at tyre pressure (bar)								Speed (km/h)
							1.6	2.0	2.4	2.8	3.2	3.6	4.0	4.4	
24 inch							1.6	2.0	2.4	2.8	3.2	3.6	4.0	4.4	
							2120	2500	2885	3270	3650	4010	4375		50
							2120	2500	2885	3270	3650	4010	4375		40
460/70 R 24 IND 159A8/159B	15	475					2240	2650	3055	3460	3870	4275	4680		30
	16	485	1245	556	3735*	600	2320	2740	3165	3585	4010	4435	4860		25
	14	465					2570	3140	3710	4280	4850	5420	5990	6560	10 cycl.
							3940	4815	5690	6560	7435	8310	9185	10060	0 stat.

* Loaded static radius and rolling circumferences are calculated.
Specifications are subject to change without notice.
For other rims contact your Continental specialist.

MPT 81

Multi Purpose Tyre

Tyre size LI/SSY	Rim width	Section width (mm)	Overall dia- meter (mm)	Loaded static radius (mm)	Rolling circum- ference (mm)	Tyre load capacity (kg) at tyre pressure (bar)										Speed (km/h)						
						2.0	2.5	3.0	3.5	4.0	4.25	4.5	5.0	5.25	5.5		6.0	6.5				
16 inch						2.0	2.5	3.0	3.5	4.0	4.25	4.5	5.0	5.25	5.5	6.0	6.5					
315/55 R 16 MPT 120K/124F	11 x 16 10 x 16	339 329	750	344	2250	910	1090	1285	1400									110				
						910	1090	1285	1400												100	
						950	1120	1320	1450	1600												80
						1000	1200	1415	1540	1600												60
						1020	1215	1450	1550	1600												50
						1140	1365	1610	1750	1600												30
						1365	1635	1930	2100	1600												20
						1640	1960	2315	2520	1600												10
						2275	2725	3215	3500	1600												0
20 inch						2.0	2.5	3.0	3.5	4.0	4.25	4.5	5.0	5.25	5.5	6.0	6.5					
275/80 R 20 MPT 134K	9 x 20 9-20 SDC	289 289	950	440	2850	990	1185	1370	1545	1715	1795	1875	2030	2120				110				
						990	1185	1370	1545	1715	1795	1875	2030	2120							100	
						1030	1230	1425	1610	1785	1870	1950	2110	2205								80
						1090	1305	1510	1700	1890	1975	2085	2235	2330								60
						1110	1330	1530	1725	1920	2010	2100	2270	2370								50
						1240	1480	1710	1925	2140	2240	2340	2540	2650								30
						1490	1780	2060	2315	2570	2690	2810	3050	3180								20
						1780	2130	2470	2780	3090	3235	3380	3650	3820								10
						2480	2960	3430	3860	4290	4490	4690	5080	5300								0
335/80 R 20 MPT 147K	11 x 20 11-20 SDC 9 x 20 10 x 20 12 x 20	354 354 334 344 364	1032	480	3120	1320	1575	1800	2020	2240	2335	2430	2625	2715	2800	2975	3075	110				
						1320	1575	1800	2020	2240	2335	2430	2625	2715	2800	2975	3075	100				
						1375	1640	1870	2100	2330	2430	2530	2730	2825	2910	3095	3200	80				
						1450	1735	1980	2220	2465	2570	2675	2890	2990	3080	3275	3385	60				
						1480	1760	2020	2265	2510	2615	2720	2940	3040	3135	3330	3440	50				
						1650	1970	2250	2525	2800	2920	3040	3280	3390	3500	3720	3840	30				
						1980	2360	2700	3030	3360	3505	3650	3940	4070	4200	4460	4610	20				
						2380	2840	3240	3635	4030	4200	4370	4730	4890	5045	5360	5540	10				
						3300	3940	4500	5050	5600	5840	6080	6560	6780	7000	7440	7690	0				
365/80 R 20 MPT 152K	11-20 SDC 12 x 20	380 390	1089	502	3275	1445	1730	2000	2290	2575	2650	2725	3000	3140	3275	3550	110					
						1445	1730	2000	2290	2575	2650	2725	3000	3140	3275	3550	100					
						1500	1800	2080	2380	2678	2755	2834	3120	3265	3410	3690	80					
						1590	1905	2200	2520	2832	2915	2997	3300	3455	3600	3905	60					
						1620	1940	2240	2560	2885	2970	3050	3360	3520	3670	3980	50					
						1805	2160	2500	2860	3220	3310	3405	3750	3925	4095	4440	30					
						2165	2595	3000	3430	3860	3975	4090	4500	4710	4910	5325	20					
						2600	3115	3600	4120	4635	4770	4905	5400	5650	5895	6390	10					
						3610	4325	5000	5720	6435	6625	6810	7500	7850	8190	8875	0					

MPT 70E

Multi Purpose Tyre

Tyre size LI/SSY	Rim width	Section width (mm)	Overall diameter (mm)	Loaded static radius (mm)	Rolling circum- ference (mm)	Tyre load capacity (kg) at tyre pressure (bar)						Speed (km/h)
						1,5	2,0	2,5	3,0	3,5	3,75	
18 inch						1,5	2,0	2,5	3,0	3,5	3,75	
325/70 R 18 MPT 125E/138A2	9x18 10x18 11x18	313 323 333	933	423	2863	750	1010	1200	1380	1560	1650	Transport 70
						850	1130	1345	1545	1750	1850	Transport 50
						1000	1245	1480	1700	1920	2010	25
						1175	1465	1740	2000	2260	2360	Loader 10
						1880	2345	2785	3200	3615	3775	Break out 0

* Loaded static radius and rolling circumferences are calculated.
Specifications are subject to change without notice.
For other rims contact your Continental specialist.

70E

Multi Purpose Tyre

Tyre size LI/SSY	Rim width	Section width (mm)	Overall diameter (mm)	Loaded static radius (mm)	Rolling circumfer- ence (mm)	Tyre load capacity (kg) at tyre pressure (bar)						Speed (km/h)				
						1.5	2.0	2.5	3.0	3.5	3.75					
18 inch						1.5	2.0	2.5	3.0	3.5	3.75					
365/70 R 18 135B/146A2	11x18	350	969	428	2895*	1050	1325	1575	1825	2050	2175	50 Transport				
		12x18				360	1225	1550	1850	2125	2425	2550	25 Transport			
							1450	1825	2175	2500	2850	3000	10 Loader			
							2300	2900	3475	4025	4550	4800	0 Loader			
20 inch						1.5	2.0	2.5	3.0	3.5	3.75					
335/80 R 20 136B/147A2	11x20	324	1040	485	3145*	1075	1350	1625	1875	2125	2250	50 Transport				
		11-20 SDC				324	1275	1600	1900	2200	2475	2625	25 Transport			
	12x20	334				1475	1850	2225	2575	2900	3075	10 Loader				
	12-20	334				2375	2975	3575	4125	4650	4925	0 Loader				
365/80 R 20 141B/153A2	11x20	372	1098	500	3302*	1250	1550	1875	2150	2450	2575	50 Transport				
		11-20 SDC				372	1500	1875	2250	2600	2925	3100	25 Transport			
	12x20	382				1750	2200	2650	3050	3450	3650	10 Loader				
	12-20	382				2825	3550	4250	4900	5550	5850	0 Loader				
405/70 R 20 143B/155A2	13x20	400	1064	486	3227*	1300	1650	1975	2275	2375	2725	50 Transport				
		13-20 SDC				400	1600	2025	2400	3000	3150	3300	25 Transport			
	12x20	390				1875	2350	2800	3250	3675	3875	10 Loader				
							3000	3750	4475	5200	5900	6200	0 Loader			

* Loaded static radius and rolling circumferences are calculated.
Specifications are subject to change without notice.
For other rims contact your Continental specialist.

Conversion Table

SRI	Rim Code	Inch Size Code	90% Tyres	85% Tyres	80% Tyres	75% Tyres	70% Tyres	65% Tyres	60% Tyres	55% Tyres
450	20						280/70 R 20			
							300/70 R 20			
475	20	11.2 R 20					320/70 R 20			
500	20						360/70 R 20	420/65 R 20		
	24	9.5 R 24								
525	20	14.9L R 20				380/75 R 20	380/70 R 20	440/65 R 20		
	24	11.2 R 24		280/85 R 24			320/70 R 24			
550	24	12.4 R 24		320/85 R 24			360/70 R 24	420/65 R 24		
	28	9.5 R 28		240/85 R 28				340/65 R 28		
575	24	13.6 R 24		340/85 R 24		380/75 R 24	380/70 R 24	440/65 R 24		
	28	11.2 R 28		280/85 R 28			320/70 R 28			
600	24	14.9 R 24		380/85 R 24			420/70 R 24	480/65 R 24		
							460/70 R 24	500/65 R 24		
625	26	13.6 R 26								
	28	12.4 R 28		320/85 R 28			360/70 R 28	420/65 R 28		
650	24	16.9 R 24		420/85 R 24			480/70 R 24	540/65 R 24		
							500/70 R 24			
675	28	14.9 R 26								
							13.6 R 28	340/85 R 28		380/70 R 28
700	24	18.4 R 24								
							16.9 R 26			480/70 R 26
725	28	14.9 R 28		380/85 R 28		420/75 R 28	420/70 R 28	480/65 R 28	520/60 R 28	
							18.4 R 26			520/70 R 26
750	28	16.9 R 28		420/85 R 28		480/75 R 28	480/70 R 28	540/65 R 28	600/60 R 28	
							14.9 R 30	380/85 R 30		420/70 R 30
775	24			500/85 R 24						
							14.9 R 30			
800	26				520/80 R 26		580/70 R 26			750/55 R 26
							18.4 R 28			600/65 R 28
825	30	16.9 R 30		420/85 R 30			480/70 R 30	540/65 R 30	600/60 R 30	
										620/70 R 26
850	28				500/80 R 28	540/75 R 28	600/70 R 28			
							18.4 R 30	420/90 R 30	460/85 R 30	
875	34	14.9 R 34		380/85 R 34						
							12.4 R 38		320/85 R 38	
900	28						620/70 R 28			
							21L R 30			600/70 R 30
925	32							600/65 R 32		
							16.9 R 34	420/85 R 34	480/75 R 34	480/70 R 34
950	34						500/70 R 34			
							13.6 R 38	340/85 R 38	380/80 R 38	400/75 R 38

Conversion Table

SRI	Rim Code	Inch Size Code	90% Tyres	85% Tyres	80% Tyres	75% Tyres	70% Tyres	65% Tyres	60% Tyres	55% Tyres
	26							750/65 R 26		
	30			500/85 R 30			620/70 R 30		710/60 R 30	
775				520/85 R 30						
	34	18.4 R 34		460/85 R 34		520/75 R 34	520/70 R 34	600/65 R 34	650/60 R 34	710/55 R 34
							540/70 R 34			
	38	14.9 R 38		380/85 R 38						
	30	23.1 R 30				620/75 R 30	650/70 R 30	710/65 R 30		
800						540/75 R 34	600/70 R 34			
	38	16.9 R 38		420/85 R 38			480/70 R 38	540/65 R 38	600/60 R 38	
	32	24.5 R 32					680/70 R 32			
825										
	34	20.8 R 34						650/65 R 34	710/60 R 34	
	38	18.4 R 38		460/85 R 38	480/80 R 38	520/75 R 38	520/70 R 38	600/65 R 38	650/60 R 38	
		24.5 R 32					650/75 R 32	800/65 R 32		900/55 R 32
	32	30.5L R 32					680/75 R 32			
							710/75 R 32			
875						580/80 R 34	650/75 R 34	750/65 R 34		
		20.8 R 38		520/85 R 38			580/70 R 38	650/65 R 38	710/60 R 38	
	38						600/70 R 38			
							620/70 R 38			
	42	18.4 R 42			480/80 R 42			600/65 R 42		
	32			680/85 R 32			800/70 R 32		900/60 R 32	1000/55 R 32
	34					710/75 R 34				
	38					650/75 R 38	710/70 R 38	750/65 R 38		
925										
	42	20.8 R 42		520/85 R 42			580/70 R 42	650/65 R 42	710/60 R 42	
							620/70 R 42			
	46				480/80 R 46	520/75 R 46				
	38			650/85 R 38		710/75 R 38	800/70 R 38		900/60 R 38	
	42			580/85 R 42		650/75 R 42	710/70 R 42		750/60 R 42	
975										
	46			520/85 R 46		580/75 R 46	620/70 R 46	650/65 R 46		800/55 R 46
	50				480/80 R 50					
1025										
	38			710/85 R 38						
	42						710/75 R 42	800/70 R 42	800/65 R 42	900/60 R 42
1125										
	46					750/75 R 46		900/65 R 46		

Dimensions in yellow: Continental tyre range

This table is based on the SRI (Speed Radius Index).

The SRI is, by convention, a parameter of the theoretical speed of vehicles for a potential change in tyre size. The SRI is not equivalent to the rolling circumference and cannot be used as, or converted into, an actual measurable value of rolling circumference. When changing tyre size, it is necessary to check the compatibility of rim parameters and measurements, technical parameters and the regulations provided by the vehicle manufacturers.

The base of this table is the SRI (Speed Radius Index). The SRI does inside the European Union by convention a parameter of the theoretical speed of vehicles for a possibility interchange of different tyre sizes. The SRI is not corresponding with the rolling circumference and not guarantee for practical using. In case of changing the tyre size, it's very important to check the compatibility of rim parameters and also measurements, technical parameters and regulations of the vehicle producer for individual use.

Load Index

LI	kg	lbs	LI	kg	lbs	LI	kg	lbs	LI	kg	lbs	LI	kg	lbs
101	825	1,820	121	1,450	3,200	141	2,575	5,680	161	4,625	10,200	181	8,250	18,200
102	850	1,870	122	1,500	3,300	142	2,650	5,840	162	4,750	10,500	182	8,500	18,700
103	875	1,930	123	1,550	3,420	143	2,725	6,000	163	4,875	10,700	183	8,750	19,300
104	900	1,980	124	1,600	3,520	144	2,800	6,150	164	5,000	11,000	184	9,000	19,800
105	925	2,040	125	1,650	3,640	145	2,900	6,400	165	5,150	11,400	185	9,250	20,400
106	950	2,090	126	1,700	3,740	146	3,000	6,600	166	5,300	11,700	186	9,500	20,900
107	975	2,150	127	1,750	3,860	147	3,075	6,800	167	5,450	12,000	187	9,750	21,500
108	1,000	2,200	128	1,800	3,960	148	3,150	6,950	168	5,600	12,300	188	10,000	22,000
109	1,030	2,270	129	1,850	4,080	149	3,250	7,150	169	5,800	12,800	189	10,300	22,700
110	1,060	2,340	130	1,900	4,180	150	3,350	7,400	170	6,000	13,200	190	10,600	23,400
111	1,090	2,400	131	1,950	4,300	151	3,450	7,600	171	6,150	13,600	191	10,900	24,000
112	1,120	2,470	132	2,000	4,400	152	3,550	7,850	172	6,300	13,900	192	11,200	24,700
113	1,150	2,540	133	2,060	4,540	153	3,650	8,050	173	6,500	14,300	193	11,500	25,400
114	1,180	2,600	134	2,120	4,680	154	3,750	8,250	174	6,700	14,800	194	11,800	26,000
115	1,215	2,680	135	2,180	4,800	155	3,875	8,550	175	6,900	15,200	195	12,150	26,800
116	1,250	2,760	136	2,240	4,940	156	4,000	8,800	176	7,100	15,700	196	12,500	27,600
117	1,285	2,830	137	2,300	5,080	157	4,125	9,100	177	7,300	16,100	197	12,850	28,300
118	1,320	2,910	138	2,360	5,200	158	4,250	9,350	178	7,500	16,500	198	13,200	29,100
119	1,360	3,000	139	2,430	5,360	159	4,375	9,650	179	7,750	17,100	199	13,600	30,000
120	1,400	3,080	140	2,500	5,520	160	4,500	9,900	180	8,000	17,600	200	14,000	30,900

Speed Index

Speed symbol	A1	A2	A3	A4	A5	A6	A7	A8	B	C	D	E	F	G	J
Speed (km/h)	5	10	15	20	20	30	35	40	50	60	65	70	80	90	100
Speed (mph)	3	6	9	12	16	19	22	25	31	35	40	44	50	56	62

Pressure conversion table

psi	6	9	12	15	17	20	23	26	29	35	41	46	52	58	64	65	70	73	80	87
kPa	40	60	80	100	120	140	160	180	200	240	280	320	360	400	440	450	480	500	550	600
bar	0.4	0.6	0.8	1.0	1.2	1.4	1.6	1.8	2.0	2.4	2.8	3.2	3.6	4.0	4.4	4.5	4.8	5.0	5.5	6.0

Metric unit	Imperial unit
1 millimetre (mm)	= 0.03937 inches
1 metre (m)	= 1.09361 yards
1 kilometre (km)	= 0.62137 miles
1 litre (l)	= 0.21997 gallons (UK)
1 litre (l)	= 0.26417 gallons (USA)
1 gram (g)	= 0.035274 ounces
1 kilogram (kg)	= 2.205 pounds

Metric unit	Imperial unit
1 inch (")	= 25.4 millimetres
1 yard	= 0.9144 metres
1 mile (mi)	= 1.609344 kilometres
1 gallon (UK)	= 4.5461 litres
1 gallon (USA)	= 3.7854 litres
1 ounce (oz)	= 28.34952 grams
1 pound (lb)	= 0.45359 kilograms

Metric unit	Imperial unit
1 kilometre per hour (km/h)	= 0.62137 miles per hour
1 mile per hour (mph)	= 1.609344 kilometres per hour
1 kilopascal (kPa)	= 0.145 pounds per square inch
1 pound per square inch (psi)	= 6.895 kilopascal
1 bar	= 100 kilopascal
1 kilopascal (kPa)	= 0.01 bar
1 kilowatt (kW)	= 1.34 horsepower
1 horsepower (HP)	= 0.746 kilowatts
1 Newton metre (Nm)	= 0.113 inch pound
1 inch pound (in-lb)	= 8.85 Newton metre

Tyre pressure information

All tyres

Intensive road and /or front-loader use:

Inflation pressure to be increased by 0.4 bar.

Field application with high sustained torque:

Inflation pressure min. 0.8 bar with limited load and 30 km/h.

Dual use:

The table load for the individual tyre must be reduced by 12%.

Triple use:

The table load for the individual tyre must be reduced by 18%.

Tyre pressure of 0.4 bar and 0.6 bar:

Only for applications with low torque and load capacity.

Vehicle specific restrictions:

Please follow the specifications provided by the vehicle manufacturer.

Special operations:

For any special operations contact your Continental sales representative.

VF TractorMaster

TractorMaster

Tractor70

Tractor85

Hillside use:

Inflation pressure must be increased by 0.4 bar.

VF CombineMaster

CombineMaster

Hillside use:

The values are valid for an inclination up to max. 11° (20%). For higher inclinations contact your Continental sales representative.

Harvester operation in cyclical service:

Field operation only. The maximum load is limited to a distance of 1.5 km.

Continental Tyre Group Ltd

Commercial Specialty Tyres

191 High Street

Yiewsley, West Drayton

UB7 7XW

0845 6000 803

specialty@conti.de

<https://www.continental-tyres.co.uk/specialty/agriculture>